

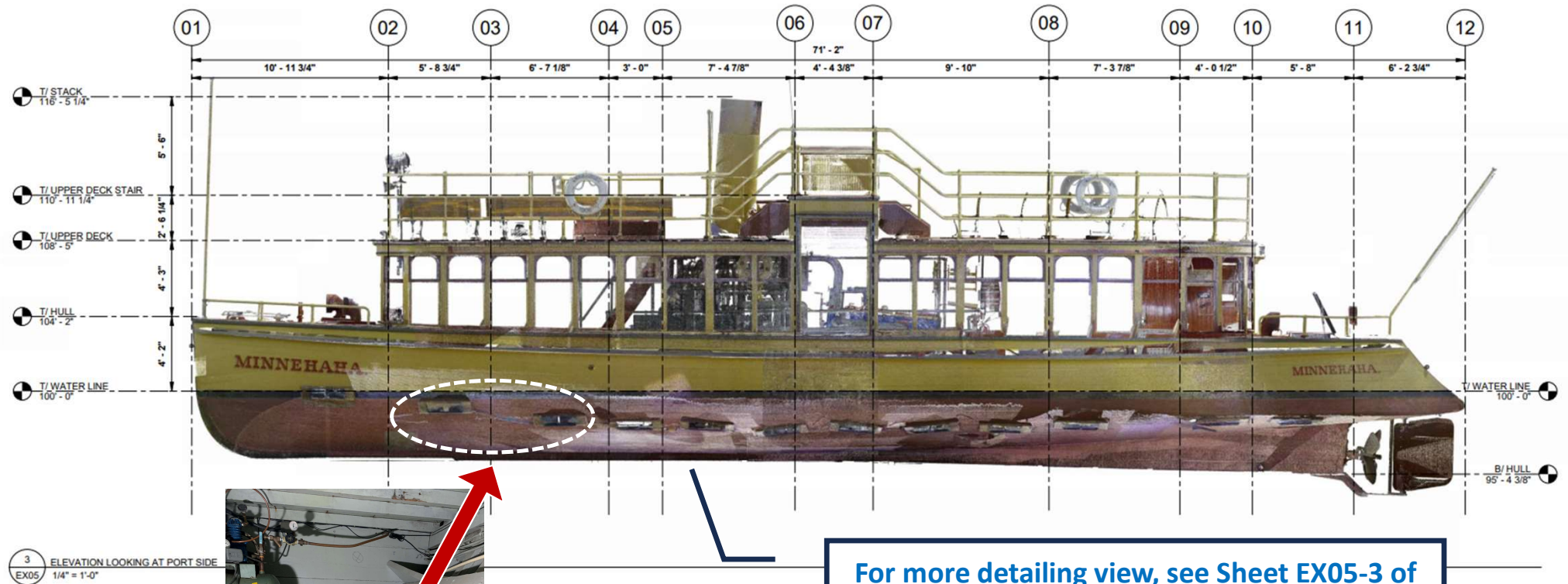


Drawing Sheets 4ABC, 5AB, 6, 7

9.15.2023

**** Also see 2D As-Built Plans (Laser Scanned March 2022) ****

DRAWING SHEET #4A (EX05-3: LAMINATED RIBS NEEDING REPLACEMENT)

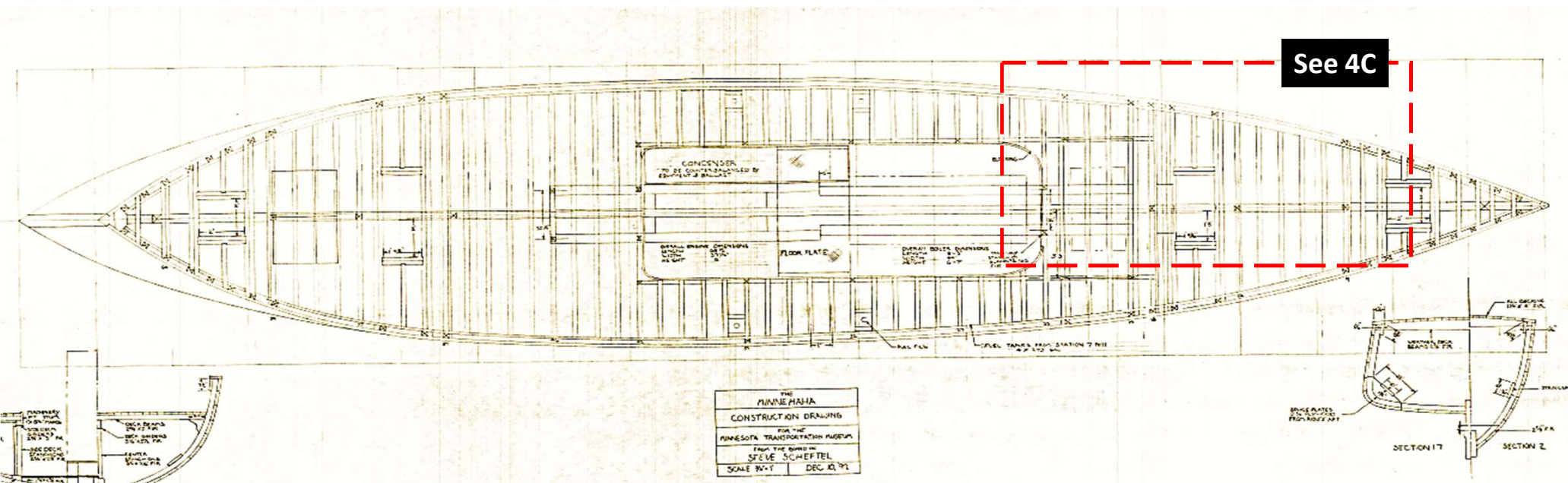


For more detailing view, see Sheet EX05-3 of 2D As-Built Plans (Laser Scanned May 2022)

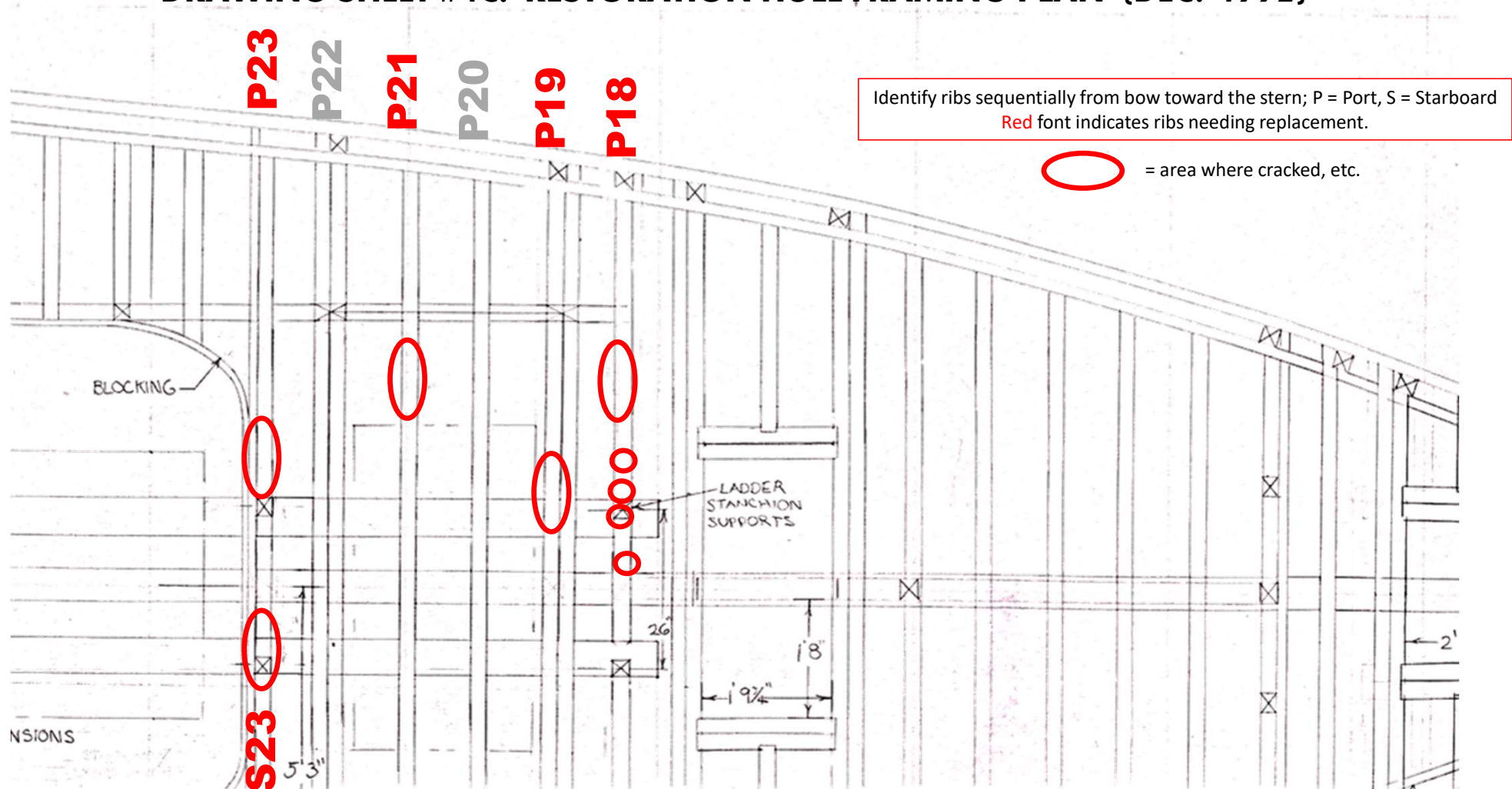
See 4B & 4C for detailed views of December 1992 Hull Restoration Framing Plan (hull's framing has not changed since being restored)

Photos 3-15

DRAWING SHEET #4B: RESTORATION HULL FRAMING PLAN (DEC. 1992)

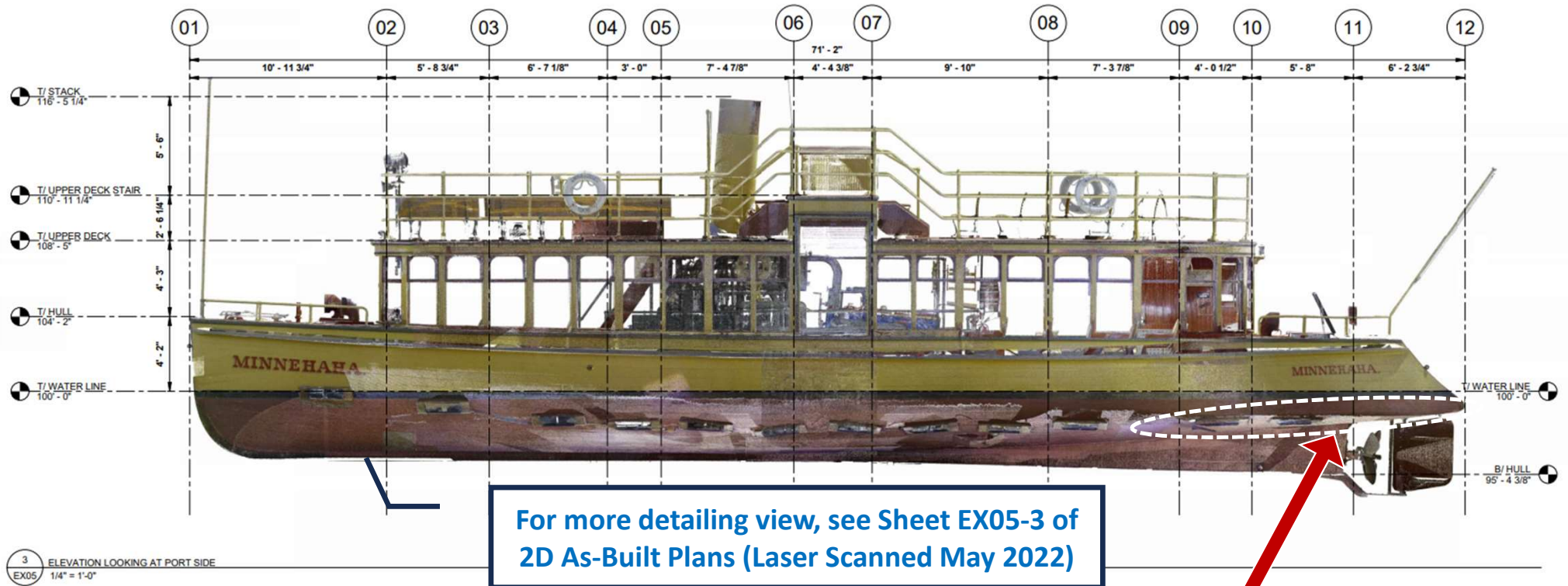


DRAWING SHEET #4C: RESTORATION HULL FRAMING PLAN (DEC. 1992)

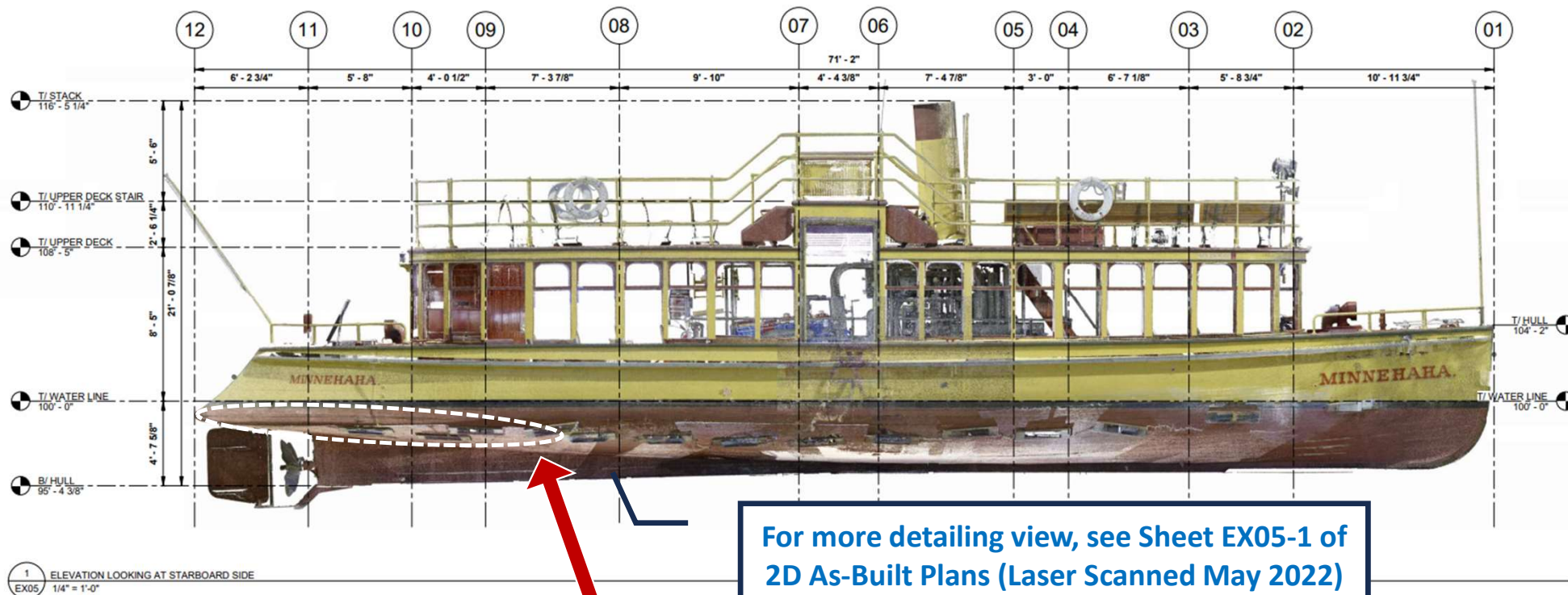


NOTE: December 1992 Hull Framing Plan from *Minnehaha* Restoration (1990-1996). Construction of the hull's framing has not changed since restoration.

DRAWING SHEET #5A: PORT WATERLINE STERN PLANK NEEDING REPLACEMENT



DRAWING SHEET #5B : STARBOARD WATERLINE STERN PLANK NEEDING REPLACEMENT

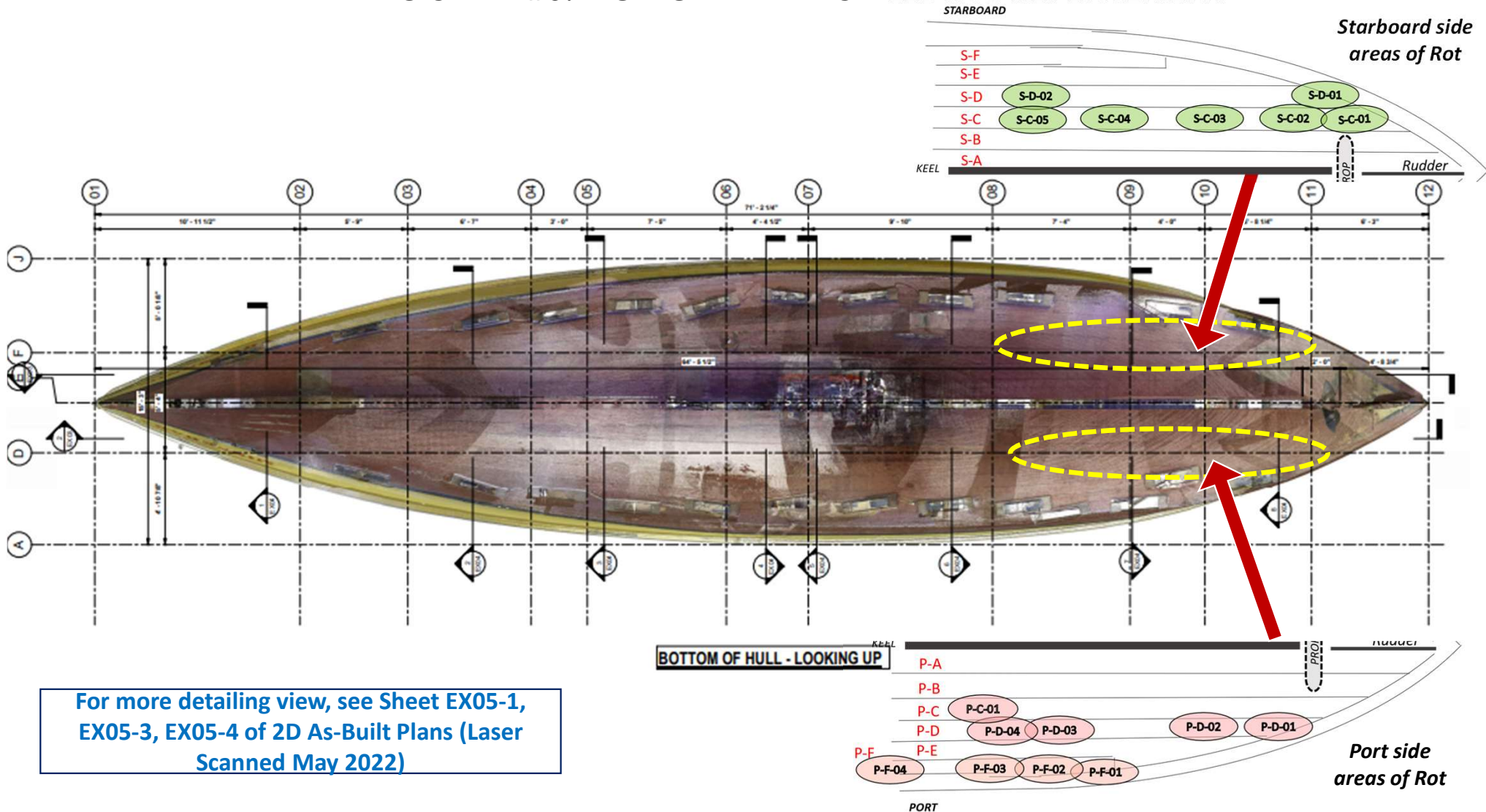


For more detailing view, see Sheet EX05-1 of
2D As-Built Plans (Laser Scanned May 2022)

Photos 16-18



DRAWING SHEET #6: BOTTOM PLANKS NEEDING REPLACEMENT



DRAWING SHEET #7: PORT RUB RAIL NEEDING REPLACEMENT

