



THE MUSEUM OF LAKE MINNETONKA

2022 Annual Meeting



September 26, 2022

Annual Meeting Notice...

- In accordance with the requirements set forth in MLM's Bylaws, Official Notice of this Annual Membership Meeting was distributed to all Regular Members no more than 30 days and no less than 10 days prior to the meeting.
- Distribution Methods...
 - Emailed to members who have consented to receive official communications electronically
 - Printed copies mailed to all who have not consented
 - Notice was also posted on MLM's website
- Included as part of the notice were...
 - Meeting date, time, place
 - Meeting agenda
 - Draft Minutes from the 2021 Annual Meeting
 - Year-End Financial Statement
 - Report of the Governance Committee, including slate of nominees for Directors and Officers

Quorum Determination

- 10% of Regular Members shall constitute a Quorum
 - Date of Record for Voter Eligibility: September 26, 2022
- Eligible Members:

| | |
|------------------------|-----------|
| • Regular Members | 73 |
| • Hall of Fame Members | <u>16</u> |
| • Total | 89 |
- Quorum Requirement (10%) = 9

Quorum Determination

The 2022 MLM Annual Membership Meeting is hereby called to order

Agenda

✓ Call To Order

• Old Business

- Approve Minutes of 2021 Annual Meeting

• New Business

- Report From The Board
- Update on New Launch Site
- A Digital *Minnehaha*
- Election of New Directors & Officers

• Adjournment

Approve Minutes of 2021 Annual Meeting

- Copies of the draft minutes of the 2021 Annual Meeting were included as part of the Meeting Notice emailed/sent to each member.
- Copies were also available at the sign-in table.
- Is there a Motion to Approve?
- Are there any proposed changes?

Report From The Board

- **The Museum**
 - Membership
 - Accountability
 - Communications
 - Financial Status
- **The Boat**
 - Maintenance
- **The Search**
 - New Site Update
 - Path Forward
- **Strategic Collaboration**
 - Update



MLM's Newest Members!



WELCOME ABOARD

Rob Bortscheller

Kelly Burns

Michael Dwyer

William Ernst

Lindsay Hannah

Mac Illan

Michael Joynt

John Malakowsky

Todd McGonagle

Becky Pierson

Peter Rogers

Mark Taylor

Andy Trick

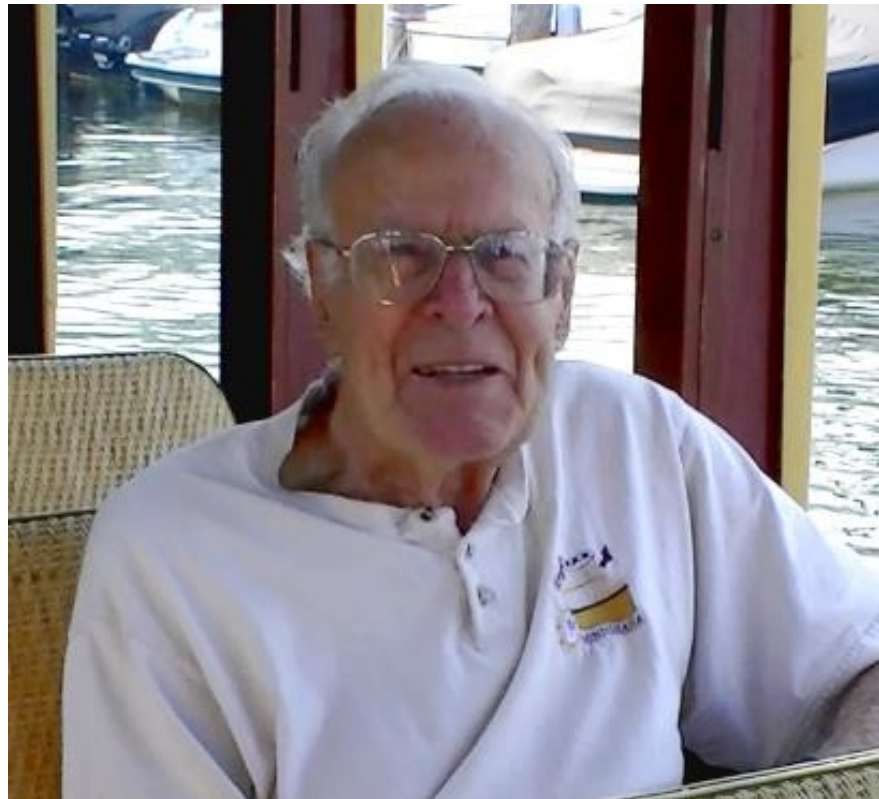
John Williamson

John Woodburn

Passings...



Martie McGlasson



Bob Woodburn



THE MUSEUM OF LAKE MINNETONKA

Our Vision...A living future for the past

Our Mission...To inspire an enduring connection to Lake Minnetonka's rich cultural heritage by operating the historic Steamboat *Minnehaha* as an authentic, living museum & community icon

Board Focus...

What MLM Needs To Do...

- Get *Minnehaha* back in the water & resume operations
- Secure a permanent home for her once & for all

What MLM Must Do To Accomplish This...

- Become the organization that inspires others to join & support

Board Strategy...

- Re-establish MLM as a credible & worthy organization

MLM's Primary Audiences...

VOLUNTEERS **...*Minnehaha's*** **stewards**

Without their expertise, dedication and stewardship, *Minnehaha* would not operate or be maintained

MEMBERS **...*Minnehaha's*** **lifeblood**

Without their passion and leadership, MLM's mission would just be a vision

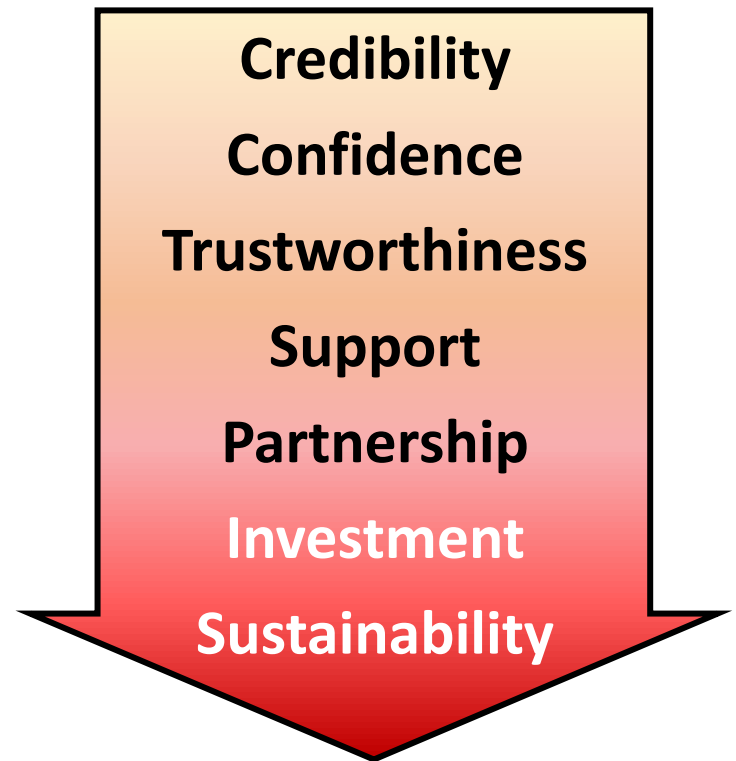
COMMUNITY **...keeps** ***Minnehaha* afloat**

Without the support and participation of the Lake Minnetonka Community, future generations will not be able to experience *Minnehaha* first-hand

Board Philosophy...

- Build trust and deepen support through every action the Board takes by striving to move further down the 'Outcome Continuum'
- The Board's Core Tenets...
 - Transparency
 - Accountability
 - Communication
 - Participation

Outcome Continuum



Enhanced Transparency, Accountability...

Bylaws Updated 2021

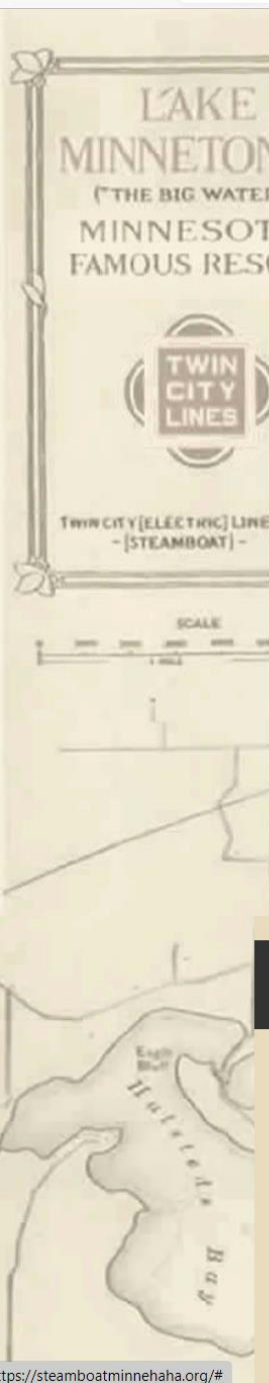
- Numerous enhancement instituted to improve Board transparency & accountability, including...
 - All Directors now elected by the membership
 - Directors limited to two consecutive terms

In 2022, the Board acted to ‘walk the talk’ providing online access to...

- Governance Documents
 - MLM Articles of Incorporation
 - MLM Bylaws
 - Mission/Vision/Values
 - MLM Member Handbook
- Board of Directors
 - Roster posted along with terms
 - Board Meetings open to attend
 - Meeting schedule posted (Date, Time, Location)
 - Approved Minutes / Financial Statements posted

www.steamboatminnehaha.org

Click on “About Us”



THE MUSEUM OF LAKE MINNETONKA

STEAMBOAT
MINNEHAHA

1906

NATIONAL REGISTER OF HISTORIC PLACES
BY THE
UNITED STATES DEPARTMENT OF THE INTERIOR



HOME MINNEHAHA ABOUT US HOW TO HELP NEWS CONTACT

Mission/Vision/Values
Articles of Incorporation
Bylaws
Board of Directors
Organizational Chart
Related Links

BE A HISTORIC TREASURE

AMBOAT MINNEHAHA

Built in 1906. Scuttled in 1926. She was rediscovered and returned to service in 1996. The streetcar steamboat *Minnehaha* is a story of dreams and ambition. She no longer has access to a launch site on Lake Minnetonka. **To return to active service, she needs a new launch.**

Minnehaha served the greater Lake Minnetonka community from 1906–1926 and again from 1996–2019. Deemed Lake Minnetonka's most important historical artifact, she now needs our help. It will take the entire community to rally as we keep the legend alive.



THE MUSEUM OF LAKE MINNETONKA

STEAMBOAT MINNEHAHA

1906

NATIONAL REGISTER OF HISTORIC PLACES
BY THE UNITED STATES DEPARTMENT OF THE INTERIOR



- HOME
- MINNEHAHA
- ABOUT US
- HOW TO HELP
- NEWS
- CONTACT

BE A HISTORIC TREASURE

AMBOAT MINNEHAHA

Mission/Vision/Values

Articles of Incorporation

Bylaws

Board of Directors

Organizational Chart

Related Links

Board of Directors

Meeting Schedule

Archive of BOD Minutes

Built in 1906. Scuttled in 1926. In 1996, the steamboat *Minnehaha* is a story of dreams and ambition. **To return to active service,** she needs a new launch site.

Minnehaha served the greater Lake Minnetonka community from 1906–1926 and again from 1966–2019. Deemed Lake Minnetonka's most important historical artifact, she now needs our help. It will take the entire community to rally as we keep the legend alive.

DONATE

What's the Status

Minnehaha has been out of service since 2019. While still shipshape, **she now needs a new launch site**. Learn more about the effort to find *Minnehaha* a new launch site and return her to passenger service.

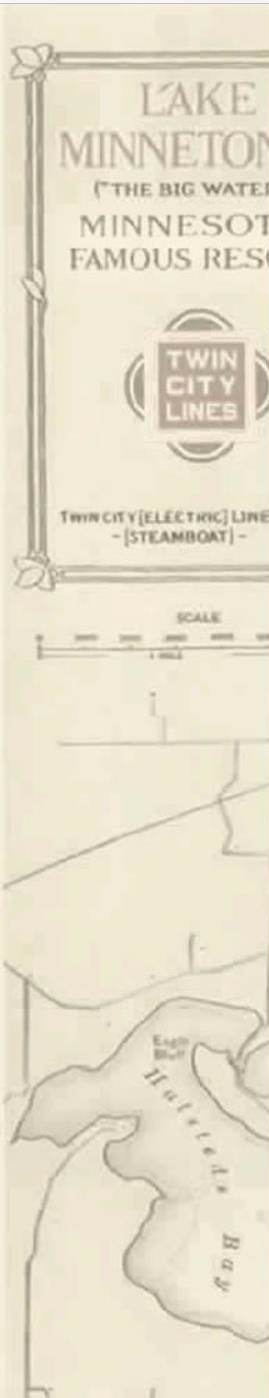
LEARN MORE

How To Help

Donate, become a member, volunteer, contact local leaders. There are several ways you can help save *Minnehaha*. Learn more about how you can support the effort to return *Minnehaha* to the waters of Lake Minnetonka.

LEARN MORE





THE MUSEUM OF LAKE MINNETONKA

STEAMBOAT MINNEHAHA

1906

NATIONAL REGISTER OF HISTORIC PLACES
BY THE UNITED STATES DEPARTMENT OF THE INTERIOR

[HOME](#) [MINNEHAHA](#) [ABOUT US](#) [HOW TO HELP](#) [NEWS](#) [CONTACT](#)



Board of Directors

BOARD MEMBERS



President / Secretary
Tom McCarthy
*Term Expires 2023



Vice President / Treasurer
Scott McGinnis
*Term Expires 2024



COMMITTEE CHAIRS

Governance: Scott McGinnis

Membership: Tom McCarthy

Collections: Aaron Person

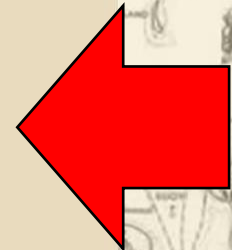
*Board terms expire at the Annual Meeting in the year indicated.

**Officers terms run until elections are held at the ensuing Annual Meeting.

[BOARD MEETINGS](#)

[BOARD MINUTES](#)

[2022 Annual Meeting](#)



New Annual Report to the Community...



Moving forward, it will be increasingly important that we reach out beyond our membership to engage the community in our efforts

Goals:

- Elevate *Minnehaha's* importance to the community
- Raise awareness of her situation
- Establish MLM's credentials as an organization worthy of community support

Distribution...

- Via email to volunteers, current/lapsed members, friends
- Posted on the MLM website
- Promoted on MLM's social media channels

Financial Report...

Year-End Statements

- Fiscal Year: April 01, 2021 – March 31, 2022
- Copies of year-end Balance Sheet & Profit/Loss Statement included as part of the Annual Meeting Notice and at sign-in

- Total Expenses: \$23,899.05
- Total Income: \$14,204.65
- Net Loss: (\$9,694.40)

August 31st

- Total Cash Holdings less Reserve: \$101,820.66

Financial Report...

Notes:

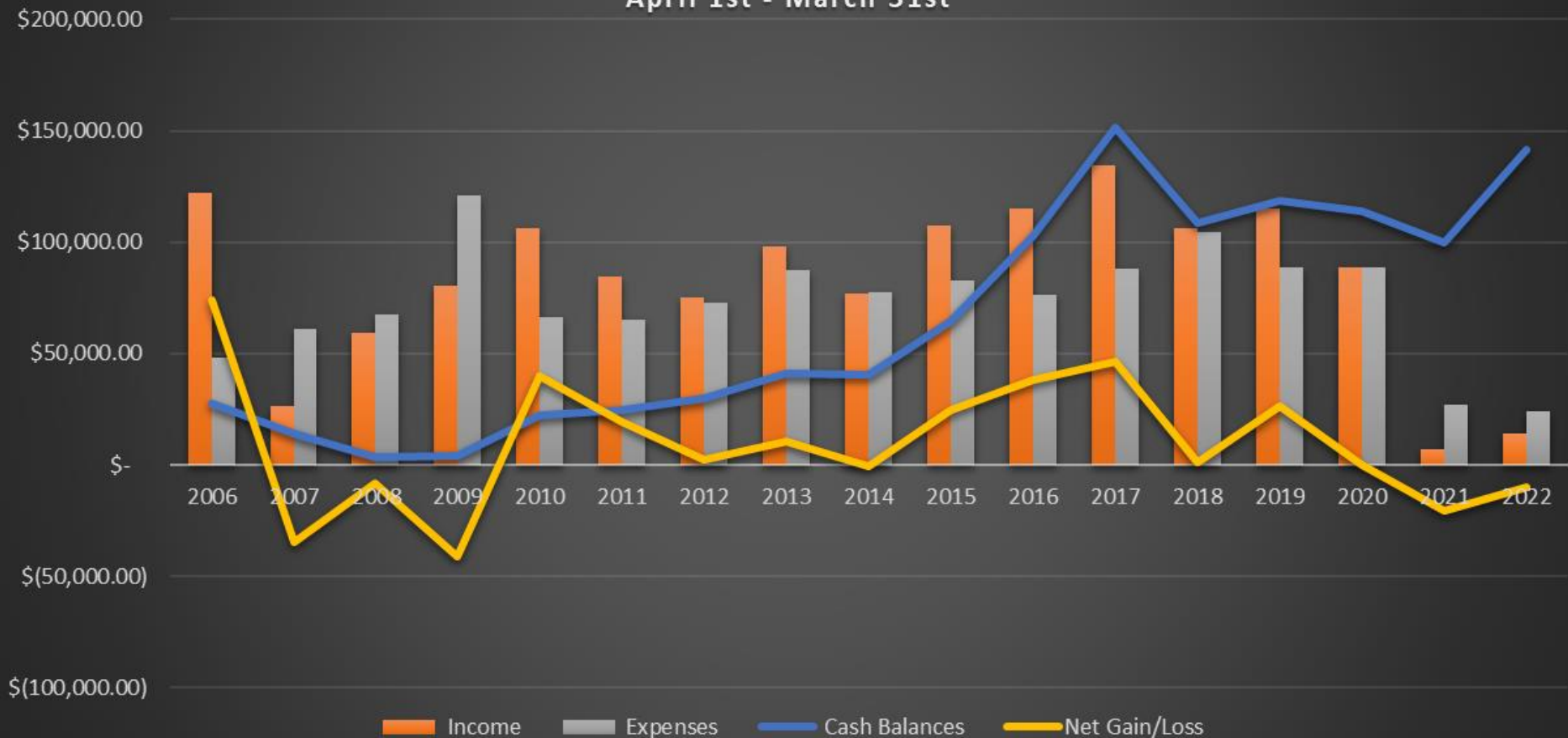
- Board implemented austerity budget to further reduce expenses
 - Use of third-party bookkeeping service discontinued
- Switched accounting method from Accrual to Cash Basis
 - Typical for most small nonprofits; Appropriate for low level of activity
- *Established \$30,000 reserve for Barn Demolition
 - Though not anticipated, demolition is required should MLM's lease of the Barn ever be terminated...and therefore a liability that must be reflected

Annual Filings:

- IRS 990 Tax Return
- Annual Charitable Organization Report (MN Attorney General)

MLM Fiscal Year End Financial Status

April 1st - March 31st



Looking Forward:

- Despite austerity efforts, 2022/23 Fiscal Year expenses will incur significant increase for insurance & barn utilities
- Current cash balance sufficient to keep the lights on for 4-5 years

Maintenance...



REPORT OF MARINE SURVEY of the vessel:

"MINNEHAHA "

PREPARED EXCLUSIVELY FOR:

The Museum of Lake Minnetonka
P.O. Box 178
Excelsior MN 55331

CONDUCTED BY:

Captain Cliff Schmidt AMS #839
on
December 15, 2021

New Condition & Value Survey

- Assessment of compliance with voluntary global safety standards established by American Boat & Yacht Council (ABYC) for the design, construction, maintenance & repair of recreational watercraft
- Purpose:
 - *Insurance Carriers* – used to determine risk of underwriting coverage on a vessel
 - *MLM* – provide an independent perspective on maintenance needs
- Performed by Capt. Cliff Schmidt
 - Society of Accredited Marine Surveyors
 - Highly experienced with wooden vessels
 - Intimately familiar with *Minnehaha*
- *Minnehaha's* last CVS: 2004

Maintenance Needs Identified...

Most callouts were minor & have (or are) being addressed...

- Disconnect 2 of 3 shore power inlets
- Add ELCI (equipment leakage circuit interrupter) breaker
- Add AC power breaker
- Install reverse polarity indicator
- Replace all wire nuts with crimp on butt connectors
- Secure wiring every 18"
- Upgrade fuel hose to ABYC compliance
- Seal all abandoned thru-hull vents
- Add screens/filters to all intakes
- Add safety globes to interior light fixtures
- Tighten loose clamps
- High-water alarm not functioning in all compartments

Hull Maintenance Needs...

The survey did callout three concerns regarding the hull...

- Pocketing between layers of anti-fouling bottom paint
- Gouge (starboard side, #2 compartment, near the keel)
- Cracked Rib (port side, #2 compartment)



Water Pocketing / Anti-Fouling Paint

- CVS report suggested multiple layers of paint could allow water to pocket which might accelerate rot
- Anti-fouling paint is designed to deteriorate / flake off – prior to launch each season, flaking paint is scraped off and a new coat applied
- Capt. Schmidt recommend stripping the hull every ~10 years



Gouge

- 1.4' long gouge on starboard side, next to keel
- Unknown event – possibly from being hung-up on trailer (?)
- Important to address to prevent rot
- The gouge has now been filled with epoxy



Cracked Ribs Needing Replacement

- CVS report identified one cracked rib
- Further inspection by St. Paul Shipwrights suggests 5 ribs should be replaced (3 cracked, 2 rot)
- All located on port side in #2 compartment – no evidence of collision, none appear to be recent



Stern Planks Needing Replacement

- St. Paul Shipwrights also recommends replacing 2 stern planks at the waterline (Port & Starboard sides)

Repair Assessment...

- All of these repairs are considered normal and not out of the ordinary for a wooden vessel.
- Wooden vessels require diligent oversight to ensure maintenance needs are discovered and addressed promptly.
- There are numerous examples of NRHP-listed vessels being re-planked.
- Now is the opportune time to address these repairs so *Minnehaha* is fully shipshape for her return to operation.

Hull Preservation Grant Application...

To preserve MLM's cash reserves, the Board is making application for grant funding to cover these repairs

- *Minnehaha* now eligible given its NRHP status
- The grant application(s) will seek funding for...
 - Structural Repairs (Ribs, planks) \$41,000
 - Hull Preparation/Painting \$16,850
 - New Bilge Pumps \$1,540
 - Total: \$59,390
- Work will not begin until funding is secured

Hull Preservation Grant Application...

The Board is actively pursuing a range of grant opportunities...

National Maritime Heritage Grants

- Funded via proceeds of the sale or scraping of obsolete vessels of the Nat'l Defense Reserve Fleet
- Administered by NPS via SHPO offices

Save America's Treasures

- Funded by the National Park Service
- 1x lifetime grant up to \$750k



MN History & Cultural Heritage Grants

- Made possible by the Arts & Cultural Heritage Fund using sales tax revenue from the Clean Water, Land and Legacy Amendment



Certified Local Government Grants (CLG)

- Excelsior's Heritage Preservation Commission already established to facilitate

Update on New Launch Site

Core Needs...



**Storage
Barn**

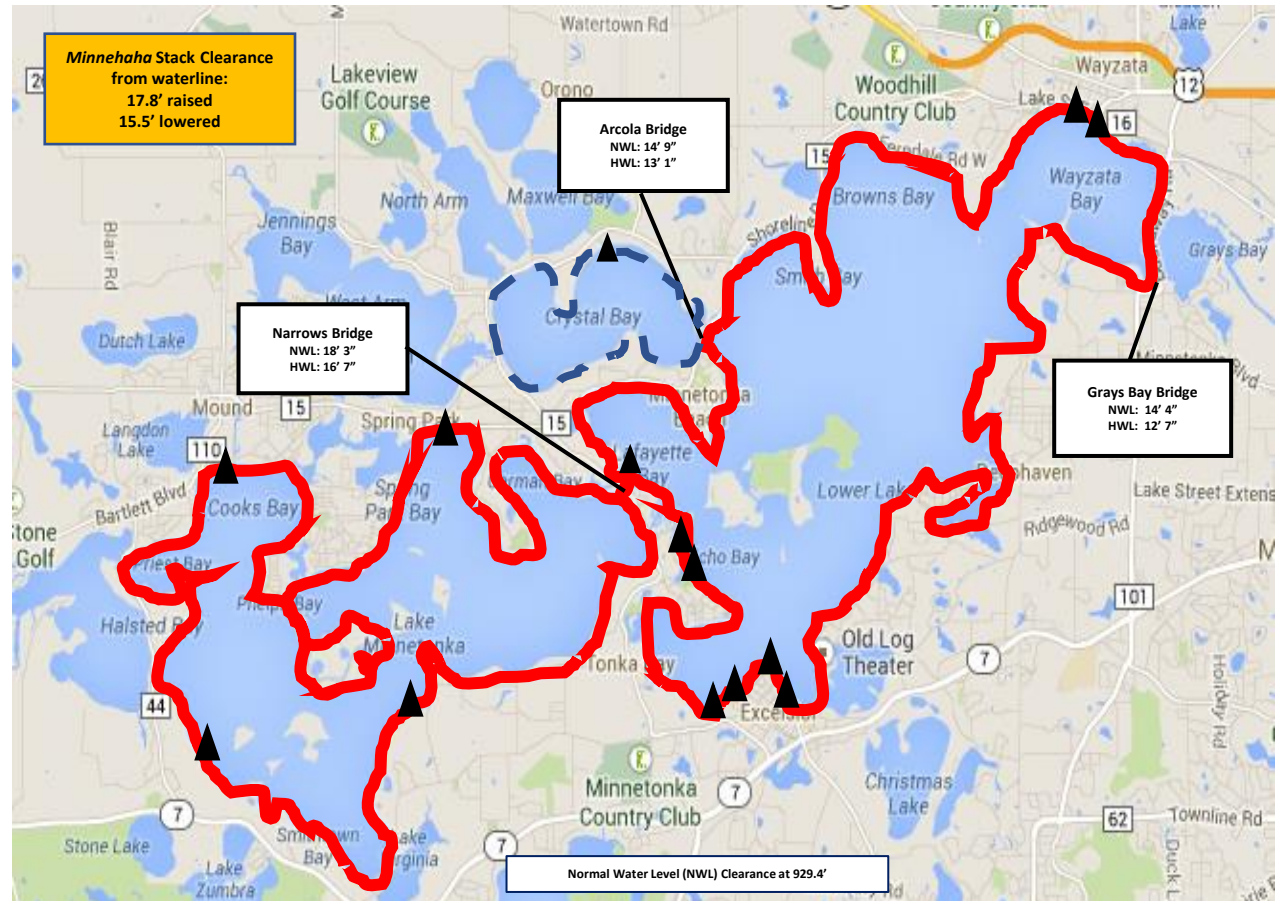


**Launch
Ramp**



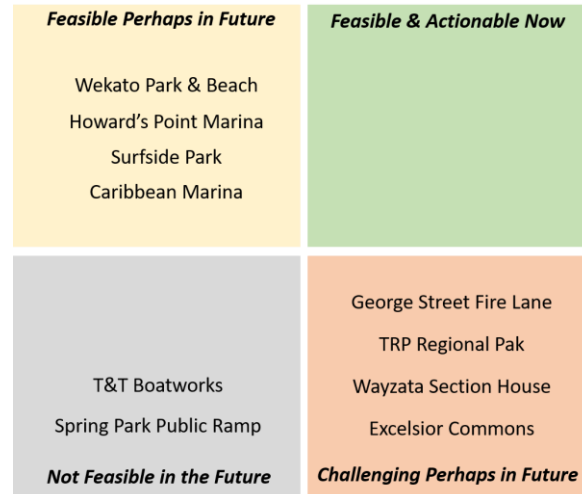
**"Home"
Dock**

Scope of MLM's Search...

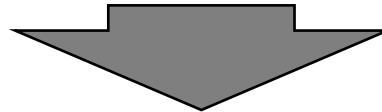


Progression of the Search...

*From MLM's 2021
Annual Meeting*



*Search subsequently
narrowed to 3 sites*



Wekato Beach Park – Tonka Bay

Lake Minnetonka Regional Park – Minnetrista



George Street Fire Lane - Excelsior

George Street Actions...



July:

- Two community informational sessions hosted with neighboring residents (collect input, solicit support)

August 15th:

- Vision to Return *Minnehaha* to Active Operation presented to the Excelsior City Council



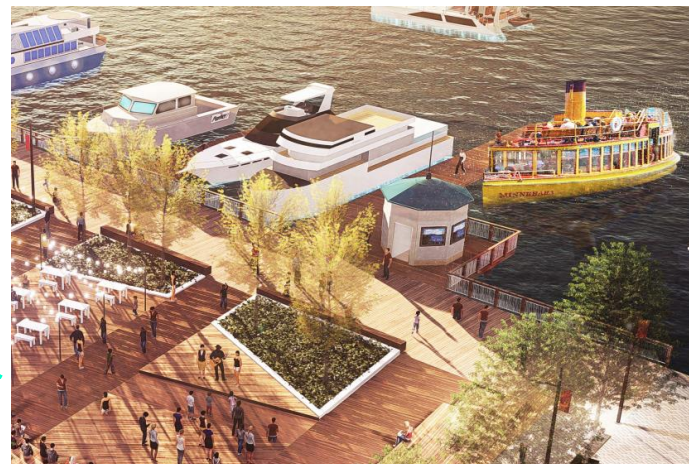
New Launch Vision...



George Street / Fire Lane



New Launch Ramp



Future Home Dock at the Port of Excelsior



New or Modified Trailer



Existing Storage Barn

Why George Street...

MLM's year-long search spanned the Upper & Lower Lake, encompassing 13 potential sites. George Street is preferred as it represents...

1. Quickest path to returning the boat to active service
2. Most realistic financially
3. All other sites require constructing a new storage barn
4. Maintains Excelsior as *Minnehaha's* historic home
5. Only site presently feasible

Route...

Existing
Channel

Map layers



Dredging
Property

Launch Route
Former Route

Winter Storage Barn



Route...

Existing
Channel

Map layers



Launch Ramp
at the Fire Lane

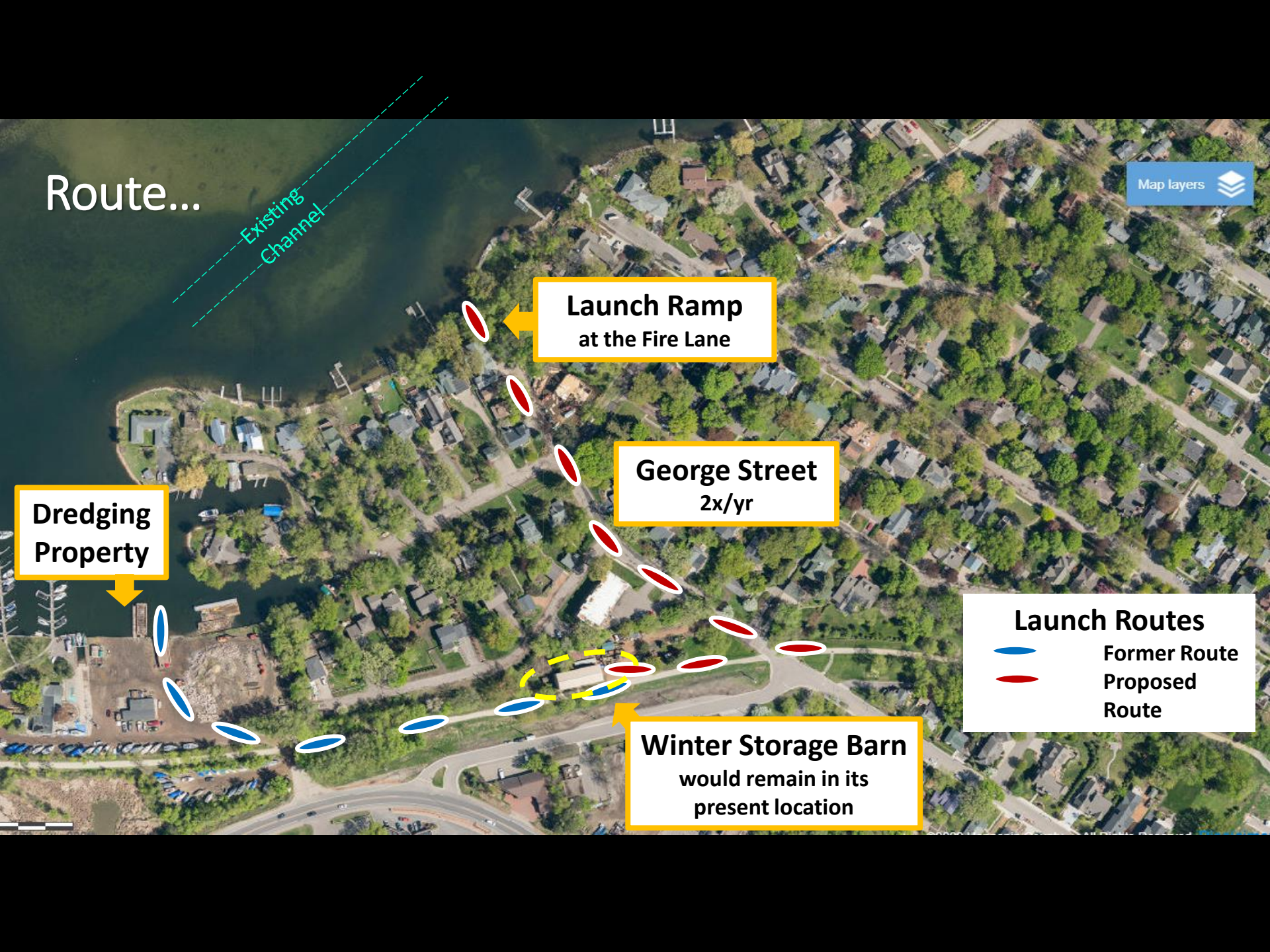
George Street
2x/yr

Dredging
Property

Launch Routes

Former Route
Proposed
Route

Winter Storage Barn
would remain in its
present location



How Would It Impact the Neighborhood...

- *Minnehaha* would use the fire lane 2x each year – launch & haul-out
- George Street would be closed while the boat is being moved
- *Minnehaha* would not be docked at the fire lane during the summer
- A new launch ramp must be constructed
- The existing storage barn would remain *Minnehaha's* winter home

George Street Closure

Twice a year event

- Weekday (not on a weekend)
- Early to mid-May, early October

Street would need to be closed to traffic while the boat is being moved (i.e., day of)

- Closure plan would be communicated to all affected residents in advance

Fire Lane would remain closed until the boat has departed

- 24 hours (or less) after boat is launched

Overhead Obstructions

~23' clearance needed to successfully navigate the proposed route

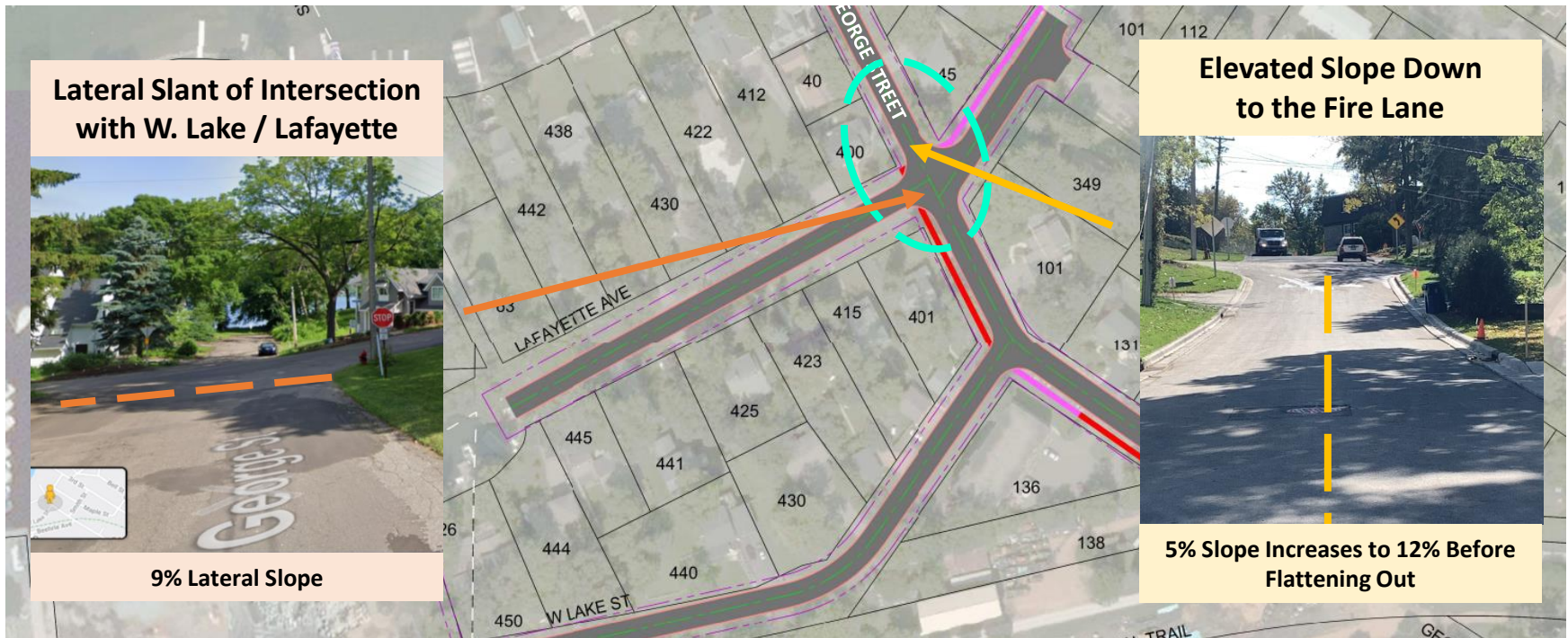
- **Overhead utilities** must be raised above 23' or buried (four locations)
- **Tree branches** would need to be removed (two locations)

■ ■ ■ ■ Utilities

■ ■ ■ ■ Tree Branches

George Street Roadbed Issues

The city's 2020 reconstruction of George Street alleviated some – but not all – of MLM's concerns regarding the feasibility of navigating the roadway to the fire lane



Ramp Improvement...

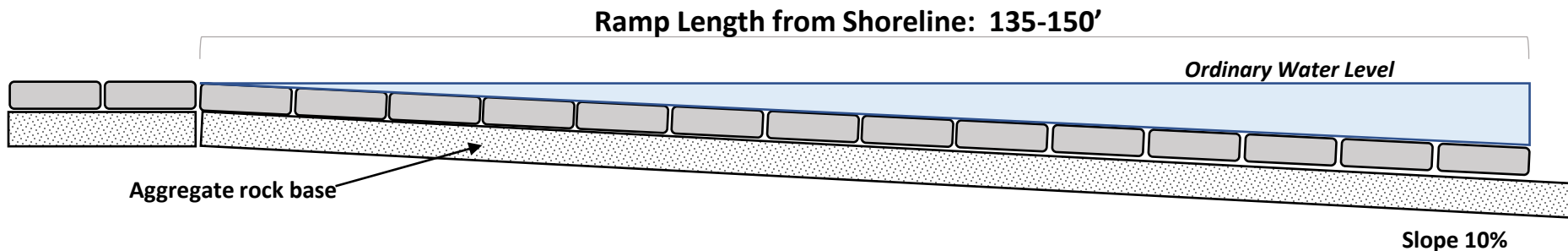


Parameters...

- Constructed using precast concrete planks
- Length determined by the boat's draft + length, ramp slope – with allowance for low water levels
- On its trailer, hull must reach depth of 7.5' to float freely
- Stern will flood at a slope > 10%

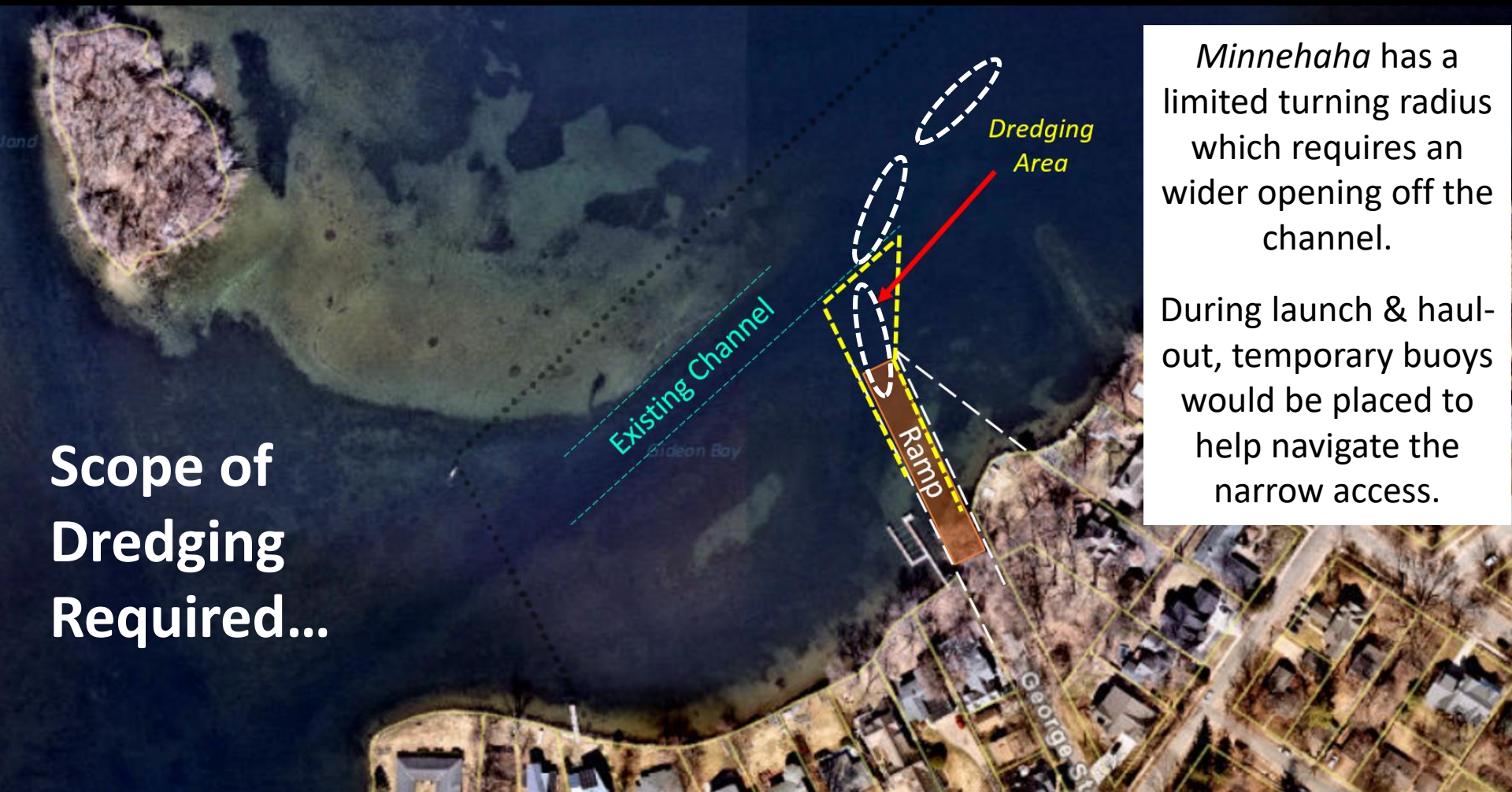


Precast Concrete Planks



Images and representations contained herein are conceptual and should not be interpreted as indicative of the final site plan / construction.

Scope of Dredging Required...



Minnehaha has a limited turning radius which requires an wider opening off the channel.

During launch & haul-out, temporary buoys would be placed to help navigate the narrow access.

Existing Depth Measurements Taken 20 February 2022

Lake level @ 928.0'
-1.35' vs 929.4' NWL

| Reference Point from Shoreline | Reference Point: Strom Sewer Drainage | | | Reference Point: Brattland Flag Pole | | |
|--------------------------------|---------------------------------------|-----------------|---------------------|--------------------------------------|-----------------|---------------------|
| | Bottom Elevation v. Mean Sea Level | Depth at 928.0' | NWL Depth at 929.4' | Bottom Elevation v. Mean Sea Level | Depth at 928.0' | NWL Depth at 929.4' |
| 110' | 925.0' | 3' 0" | 4' 5" | 923.0' | 5' 0" | 6' 5" |
| 124' | | | | 922.0' | 6' 0" | 7' 5" |
| 146' | | | | 921.5' | 6' 6" | 7' 11" |
| 150' | 924.0' | 4' 0" | 5' 5" | | | |
| 190' | 921.0' | 7' 0" | 8' 5" | | | |
| 210' | 919.0' | 9' 0" | 10' 5" | | | |

Source:

- Photo with property lines: Hennepin County Interactive Property Tax Map.
- Blue lines with green markers added (using the map's Measure Tool) to reflect locations where depth measurements were taken through the ice.



210' 9' 0"
190' 7' 0"
150' 4' 0"
110' 3' 0"



Storm System Drainage

146' 6' 6"
124' 6' 0"
110' 5' 0"



Brattland Flag Pole

Controlling Access to the Fire Lane



Currently, the only access control is a sign posted at the fire lane.

The ramp is intended for *Minnehaha* use only – **not** for the public

To prevent unauthorized public use of the ramp, aesthetically-pleasing bollards or boulders could be incorporated

- Boat slide would still be accessible to foot & bicycle traffic
- Removed/opened up when *Minnehaha* needs to launch



Removable Bollards



Natural Boulder(s)

Images and representations contained herein are conceptual and should not be interpreted as indicative of the final site plan / construction.

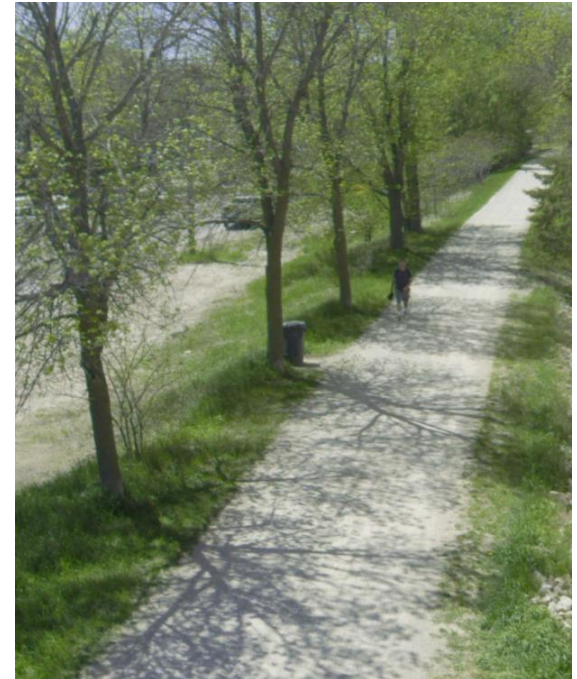
How The Fire Lane Could Look...



Currently...



Concrete Pathway...



Crushed Limestone Path...

Images and representations contained herein are conceptual and should not be interpreted as indicative of the final site plan / construction.

Boat Slide



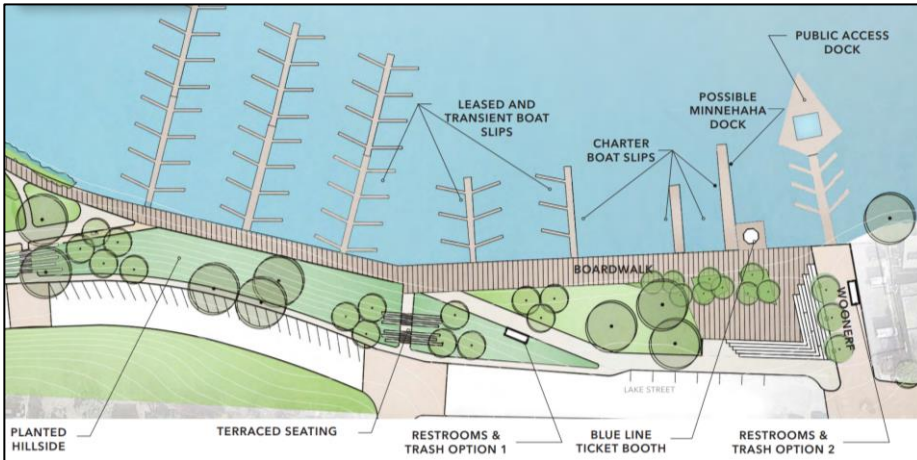
- The fire lane would continue to have a boat slide for use by residents (positioned on top of the concrete ramp).
- During launch / haul-out operations, the slide would be moved to the side and would not be available for use while *Minnehaha* is at the ramp.

Storage/Maintenance Barn



- Improvements or changes to the Barn are not critical to our the objective of getting *Minnehaha* back in the water.
- While enhancements to the Barn's lighting, energy efficiency, aesthetics, etc. are desired, improvements to the Barn are not a part of this proposal.

Future 'Home Dock' at the Port of Excelsior



- *Minnehaha* cannot return to service without a summer home dock from which to operate
- Excelsior's 2017 Master Plan for the Port envisioned *Minnehaha* as a symbol of Excelsior's heritage as the gateway to Lake Minnetonka
- The Port's 5 existing leases run through 2025
- MLM would like to partner with the City and current lease holders to explore opportunities before lease renewals are considered

Vision Entails Shared Oversight...



Actions Needed:

- ❖ Approval to transport *Minnehaha* 2x/yr via George Street to/from the fire lane
- ❖ Approval of required improvements to support a launch ramp at the fire lane
- ❖ Approval of a dock lease at the Port of Excelsior

The Excelsior City Council gave its preliminary support to MLM's Vision at its August 15th, 2022 session

Vision Entails Shared Oversight...



Actions Needed:

- ❖ Approval to transport *Minnehaha* 2x/yr via George Street to/from the fire lane
- ❖ Approval of required improvements to support a launch ramp at the fire lane
- ❖ Approval of a dock lease at the Port of Excelsior

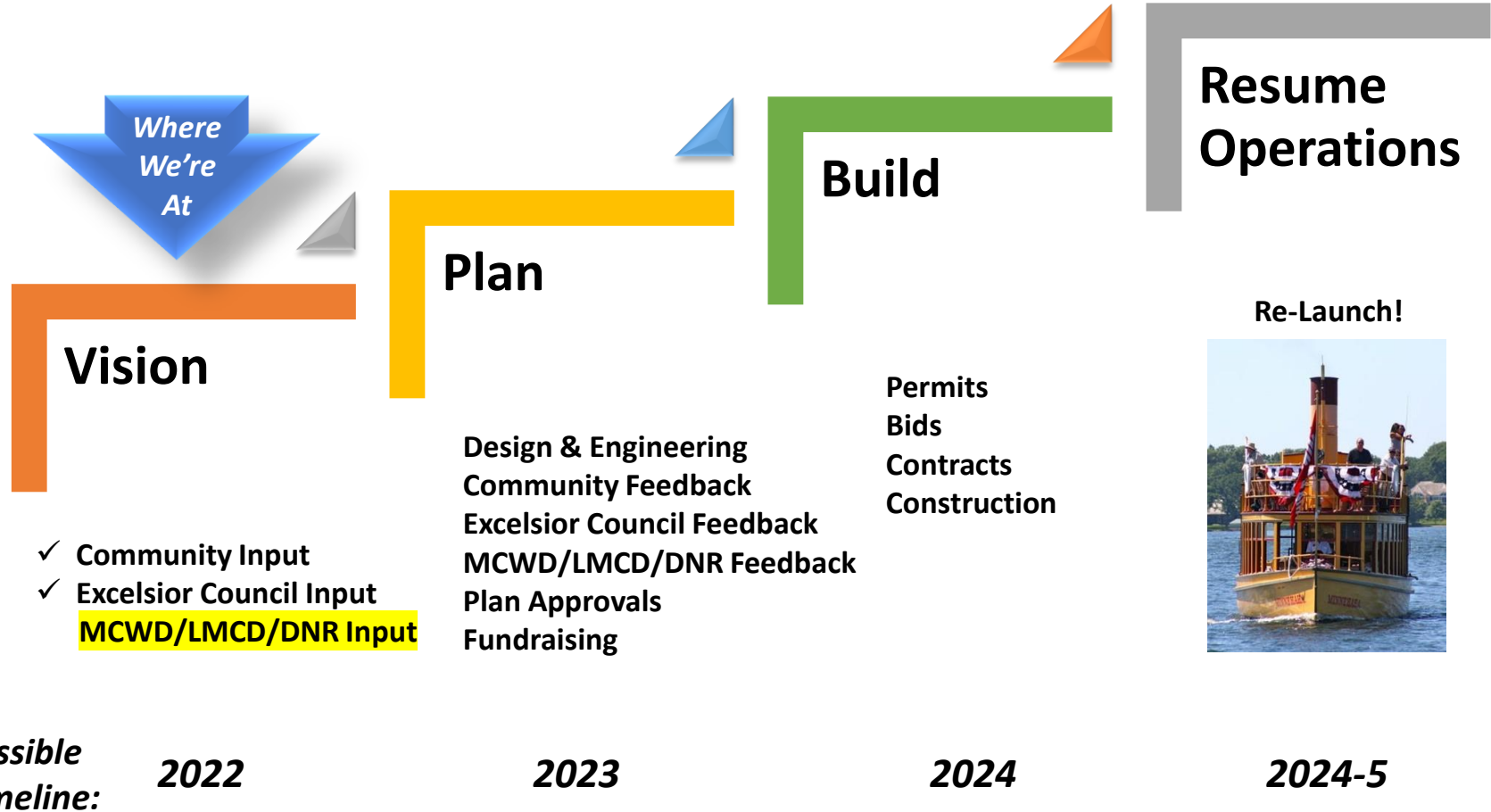
The Excelsior City Council gave its preliminary support to MLM's Vision at its August 15th, 2022 session

Actions Needed:

- ❖ Approval to construct a limited use Launch/Staging Area at the George Street fire lane
- ❖ Approval to dredge the lake bottom to ensure adequate depth for the new ramp
- ❖ Approval of Port dock configuration

MLM is now working to engage the MCWD, LMCD & DNR to determine feasibility of the proposed Vision prior to developing a formal plan

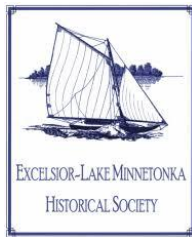
Proposed Process...



LMHS Strategic Partnership Update

Update: LMHS Strategic Partnership Exploration

For the past two and a half years, MLM along with the Excelsior-Lake Minnetonka Historical Society, Wayzata Historical Society, and Westonka Historical Society have partnered together to explore ways that our organizations can sustain our common missions and collaborate to better serve the history of the Lake Minnetonka area, now and in the future.



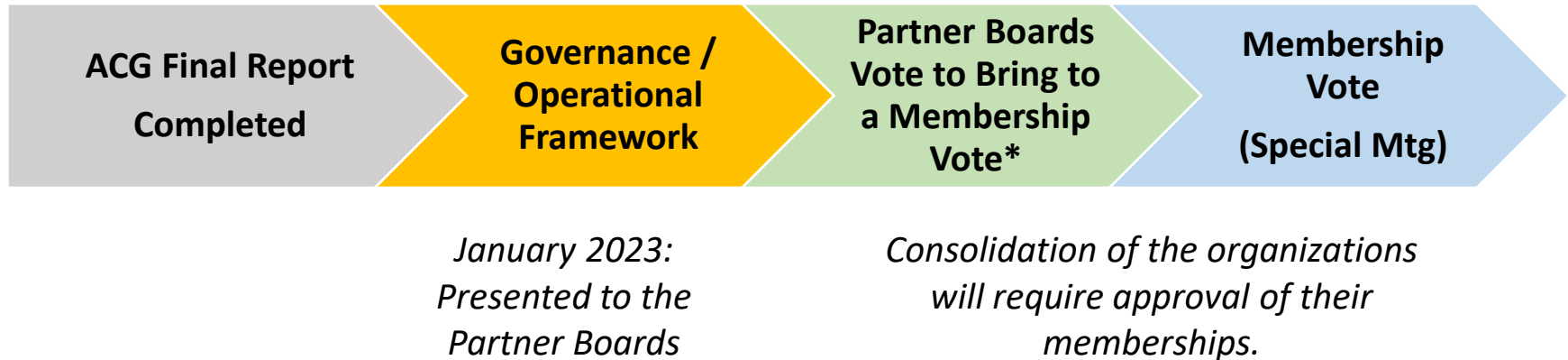
A study of this opportunity has been conducted by Arts Consulting Group and a final report recommending consolidation on an incremental basis has been distributed to our partner boards.

Update: LMHS Strategic Partnership Exploration

In order to give our boards and memberships greater insight and appreciation into how a new consolidated entity could be structured and operated, the four boards have passed a resolution directing a Joint Committee of the partners to develop a nonbinding governance and operational framework for a possible consolidation of the organizations.

The Joint Committee will also develop a vision for maintaining the history of the lake's local communities while unlocking the story of the Lake Minnetonka community as a whole.

LMHS Strategic Partnership Exploration



For more information on this initiative, contact:

Tom McCarthy, Aaron Person, Scott McGinnis, Liz Vandam

A Digital *Minnehaha*

Election of New Directors & Officers

Governance Committee:

- MLM's Bylaws stipulate that the Governance Committee is responsible for proposing a slate of nominees to serve as Directors and Officers. The Committee is also charged with bringing forward proposed amendments to the Bylaws.
- The Governance Committee consists of the President, Vice President, Treasurer, Secretary and one Regular Member appointed by the President
 - The Vice President serves as Chair of the Governance Committee
- In that two Officers held dual offices, the Committee opened the nomination process to the entire Board to participate
- The Committee's slate of nominees was included as part of the Annual Meeting's Official Notice distributed to all members.

MLM's Current Board of Directors:

Term Exp. 2022



Liz
Vandam

Terms Expiring 2023



Tom
McCarthy



Sue
Paulson

Terms Expiring 2024



Scott
McGinnis



Aaron
Person

The seat held by Liz Vandam is up for election

MLM Board of Directors Election...

Terms Expiring 2023



Tom
McCarthy



Sue
Paulson

Terms Expiring 2024



Scott
McGinnis



Aaron
Person

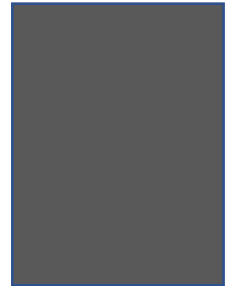


To Be
Elected

Term Expiring 2025



To Be
Elected



To Be
Elected

The Board has unanimously voted to expand from five (5) to seven (7) Directors

MLM Board of Directors Election...

Of the three seats up for election...

- Two (2) will be for 3-year terms (expiring 2025)
- One (1) will be for a 2-year term (expiring 2024)

The two highest vote-getters will be awarded the 3-year terms.

Voting Procedures:

- **Only Regular Members & Hall of Fame Members are eligible to vote**
 - Must have been a member in good standing immediately prior to the start of the Business Meeting
 - Duly qualified members were handed a ballot when signing in
 - No proxy voting – members must be present to vote
 - Majority rules
- **Each qualified voting member may cast up to three (3) votes – one for each of the three open positions**
 - If a ballot has more than three votes cast, the entire ballot will be disqualified

Governance Committee's Slate of Nominees:



Liz Vandam

- Elected to a one-year stub term on the MLM Board in 2021
- Liz has been instrumental in seeking out MLM grant opportunities
- 23-year career with United Hospital
- Serves as Director for Westonka Historical Society & Hennepin History Museum
- Author of local history books - Harry Wild Jones, Lake Minnetonka, Tangletown
- Resides in Mound with Husband Gerry

Governance Committee's Slate of Nominees:



Steve Albrecht

- 10-year *Minnehaha* volunteer as Engineer: now also serves as Paint Team Leader
- 1st connection to *Minnehaha* was as a diver searching for the boat prior to her discovery in 1979
- Environmental Chemist, Braun Intertec Corporation (retired)
- BS, Microbiology & Zoology, University of Minnesota, 1974
- An avid outdoorsman, Steve grew up on Lake Minnetonka and has lived in Chanhassen with wife Pat for 45 years

Steve regrets being unable to attend tonight due to prior travel commitments

Governance Committee's Slate of Nominees:



Jeff Cotter

- The focus of Jeff's 32-year career with Cargill was Business Development – finding opportunities where there were no clear paths & being part of the solution
- Volunteering with *Minnehaha* came naturally given his interests in history, woodworking & boating
- Jeff has served the last 6-year as a Purser & as a regular maintenance team volunteer
- Together with his wife of 43 years, Jeff & Peggy reside in Shorewood

Nominees From The Floor:

- Members may nominate additional candidates from the floor
- Nominees must agree to being nominated and be willing to serve if elected
- Nominee must be an elected Board member

Governance Committee's Slate of 2022/23 Officers:



Tom McCarthy
President



Aaron Person
Vice President



Scott McGinnis
Treasurer



Sue Paulson
Secretary

(To serve until the 2023 Annual Meeting)

Nominees From The Floor:

- Members may nominate additional candidates from the floor
 - Nominees must agree to being nominated and be willing to serve if elected
 - Nominee must be an elected Board member
- If no additional nominees are brought forward, the membership may vote by acclamation to approve the Governance Committee's proposed slate of Officers
 - Requires a motion and a second

Voting Procedures:

- **Members may cast one (1) vote per office**
- If a ballot has more than one vote cast for a particular office, all votes for *that* office will be disqualified

Bylaw Amendments

The Governance Committee has not proposed any Bylaw amendments for consideration by the membership

Adjournment

Is there a motion to Adjourn?

Management & General Expenses \$11,596 (49%)

| | |
|----------------------------------|------------------|
| Independent Contractor | 3,125.00 |
| Utilities (Non-Program Srvcs) | 1,586.00 |
| Telephone | 1,310.96 |
| Accounting Fees | 1,258.63 |
| Advertising - non fundraising | 950.00 |
| Miscellaneous | 750.00 |
| Printing & Publications | 633.72 |
| D & O Liability Insurance | 575.00 |
| Bank Charges, Credit Card Fees | 519.48 |
| PO Box Rental, Postage, Shipping | 508.00 |
| Memberships/Dues/Subscriptions | 235.00 |
| Website Service | 71.88 |
| State of MN Tax Filing Fee | 60.00 |
| Office Supplies | 12.57 |
| TOTAL: | 11,596.24 |

Comments:

Contractor – final payment NRHP submission
 Accounting fee – bookkeeper service cut
 Telephone – switched to cut long distance
 Advertising – cut
 Miscellaneous – meeting venue now donated
 Bank Charges – cut
 Membership Dues – cancelled

Projected Reduction: \$7,000+

Program Service Expenses \$12,303 (51%)

| | |
|------------------------------|------------------|
| Annual Inspections & Permits | 1,736.13 |
| Boat Insurance | 6,072.00 |
| Fire Extinguishers | 159.00 |
| Maintenance & Repair | 655.39 |
| Security | 480.00 |
| Boat Supplies | 230.31 |
| Barn Utilities | <u>2,969.98</u> |
| TOTAL: | 12,302.81 |

Comments:

Inspections – CVS Survey 1x expense

Insurance – increased significantly

Utilities – higher energy costs anticipated

Projected to Increase Overall

RECORD DRAWING

INFORMATION IS FURNISHED WITHOUT WARRANTY AS TO ACCURACY. USERS SHOULD FIELD VERIFY LOCATIONS AND ELEVATIONS.

RECORD DRAWING 2020

CONTRACTOR: NORTHDALE CONSTRUCTION CO.

GEORGE STREET

LOCATION



Excelsior



WSB PROJECT NO.:
S14771-000

SCALE: AS SHOWN
DESIGN BY: GT
PLAN BY: MJS
RECORD DRAWING
CHECK BY: BAR

REVISIONS

| NO. | DATE | DESCRIPTION |
|-----|---------|----------------|
| 1 | 12/1/20 | RECORD DRAWING |

DATE: 12/01/2020
BY: MJS
CHECKED BY: BAR
DATE: 12/01/2020
BY: MJS
CHECKED BY: BAR

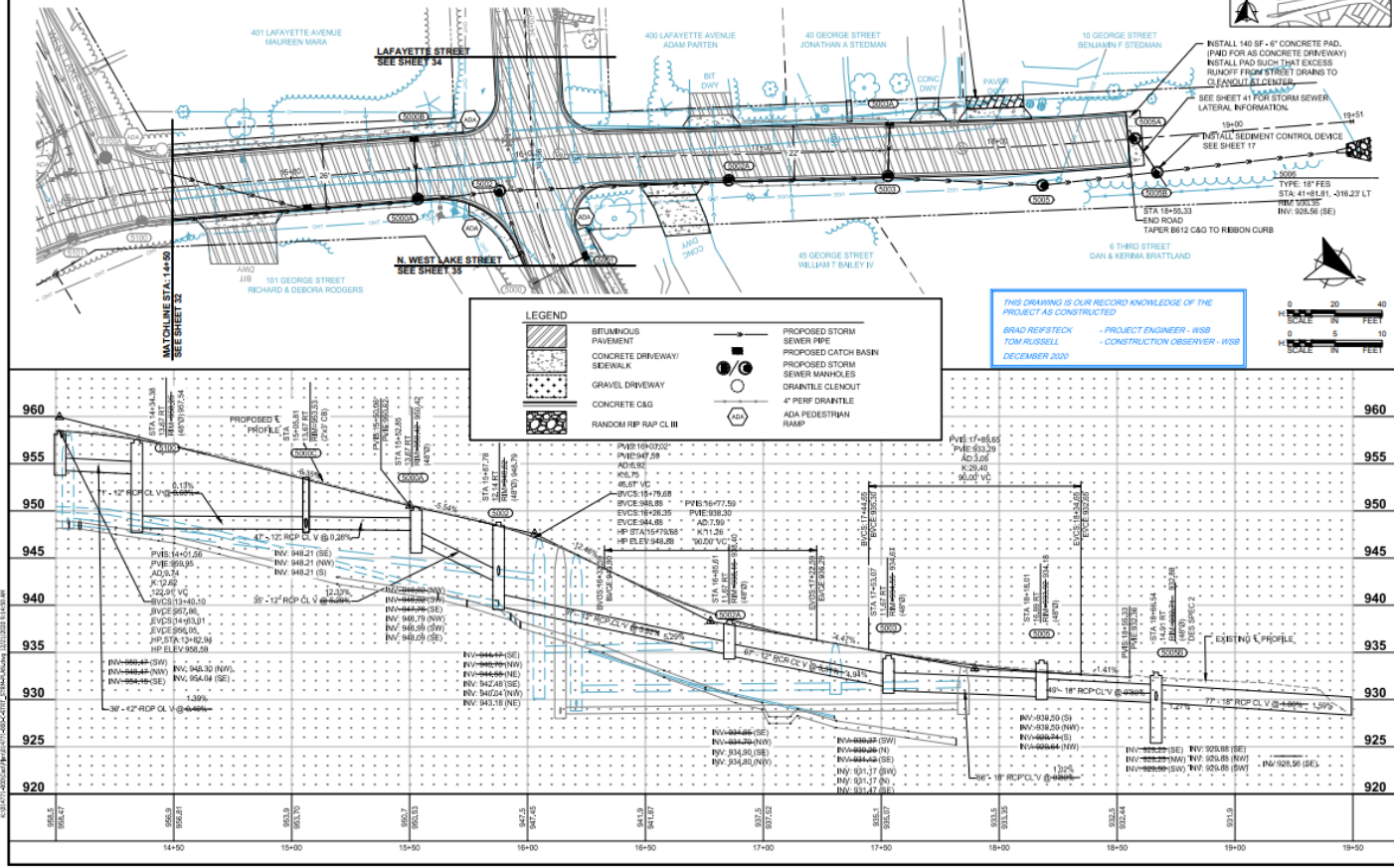
2020 STREET & UTILITY
IMPROVEMENT PROJECT

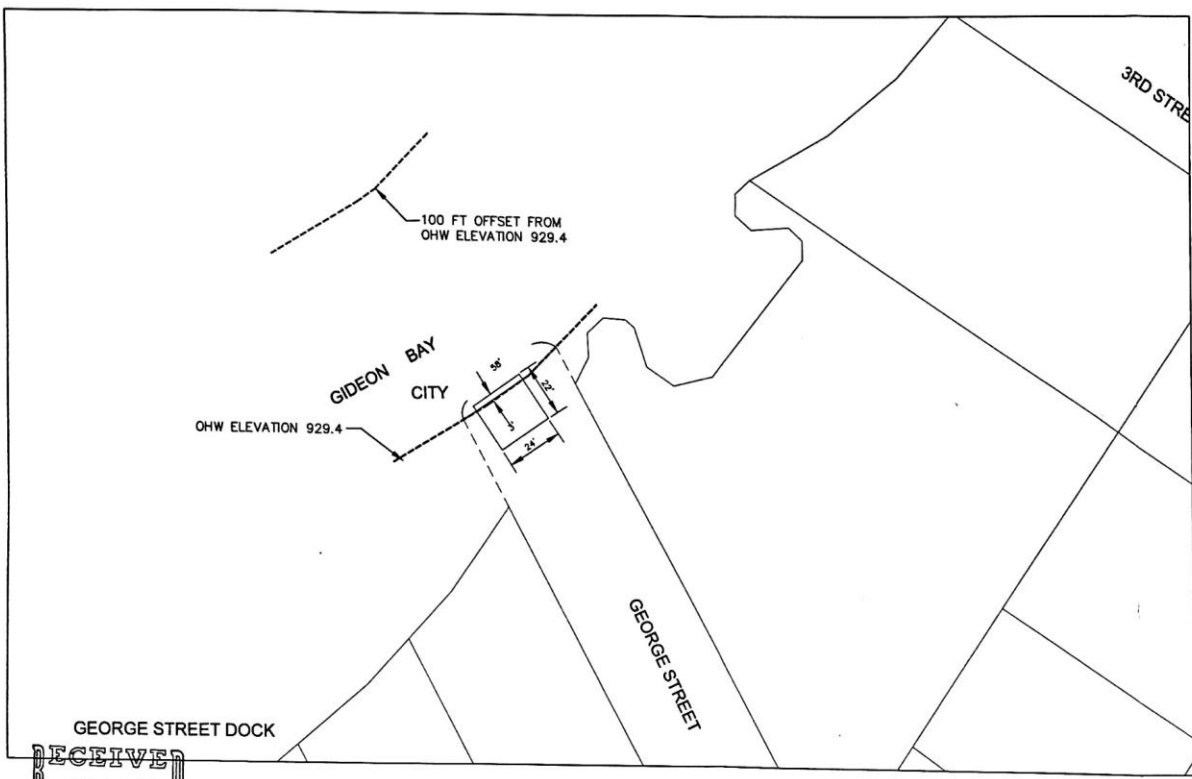
CITY OF EXCELSIOR

GEORGE STREET
STREET & STORM
SEWER PLANS

SHEET
33
OF
71

79





RECEIVED
DEC 13 2016
BY: _____

4BSU

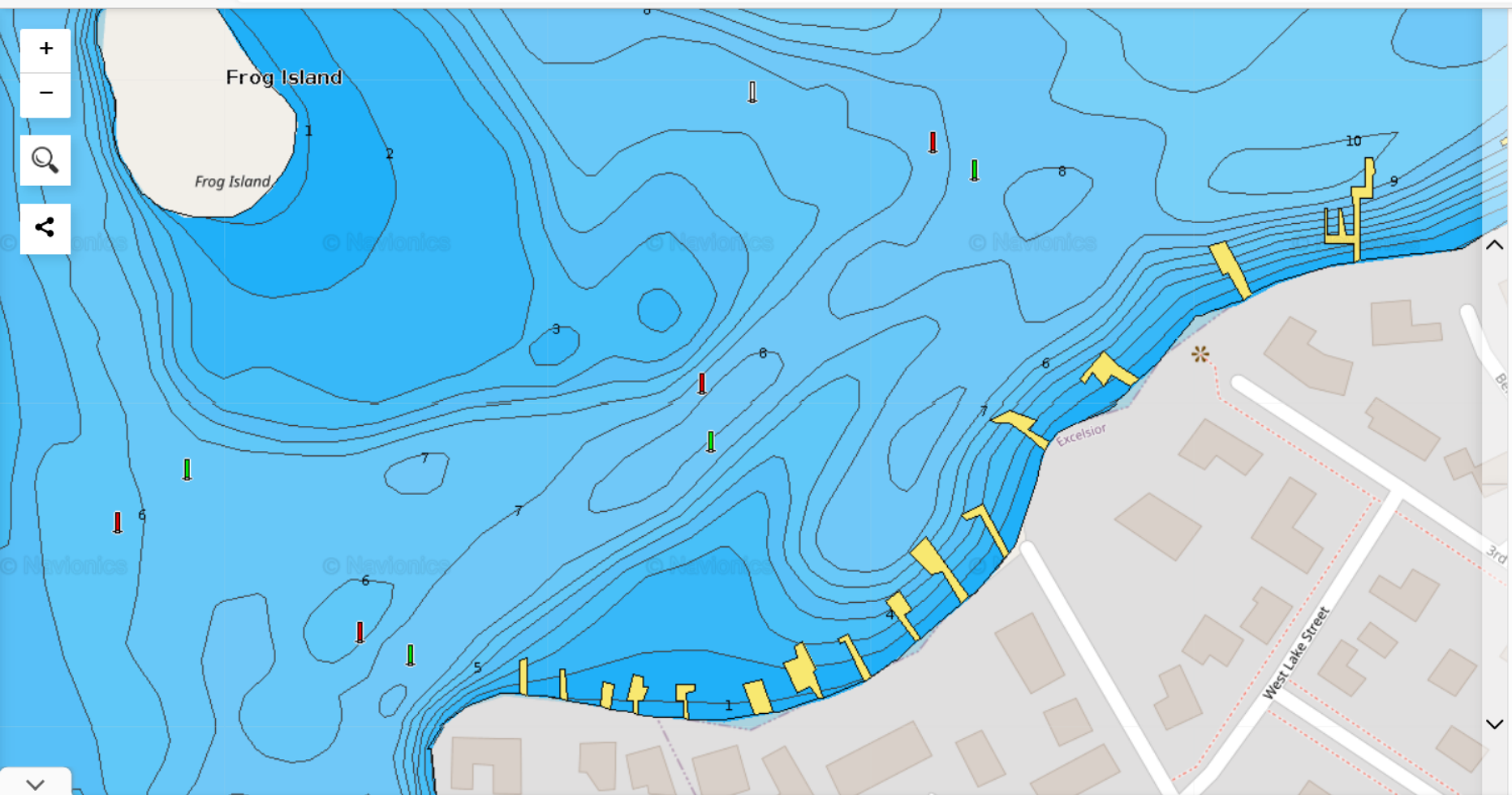
Page 1 of 8 - 4 BSUs

WSB PROJECT NO. 01140-85

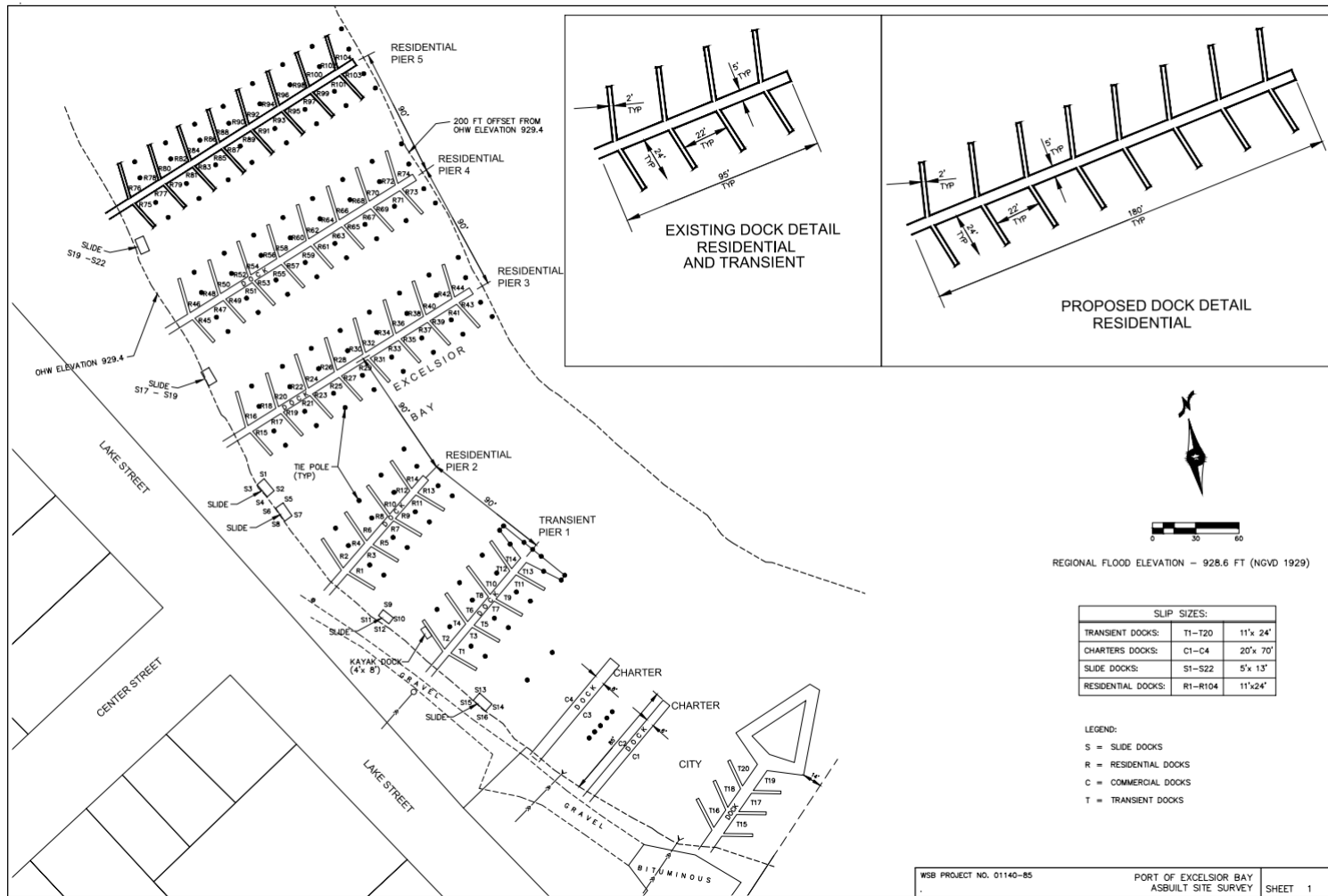
GEORGE ST.
SITE SURVEY

SHEET 1 OF 1 SHEETS

| | |
|---|--|
| MINNEHAHA CREEK WATERSHED DISTRICT DREDGING PROJECT FOR THE CITY OF EXCELSIOR, MINNESOTA | |
| PROJECT NO. 01140-85 SHEET NO. 1 OF 1 DATE: DEC 23, 2015 | DRAWN BY: J. L. HARRIS CHECKED BY: J. L. HARRIS DATE: DEC 23, 2015 |



K:\01140-85\04\Plan\1140-85 SITE SURVEY.dwg 6/18/2020 1:29:29 AM



| SLIP SIZES: | | |
|--------------------|---------|----------|
| TRANSIENT DOCKS: | T1-T20 | 11'x 24' |
| CHARTERS DOCKS: | C1-C4 | 20'x 70' |
| SLIDE DOCKS: | S1-S22 | 5'x 13' |
| RESIDENTIAL DOCKS: | R1-R104 | 11'x24' |

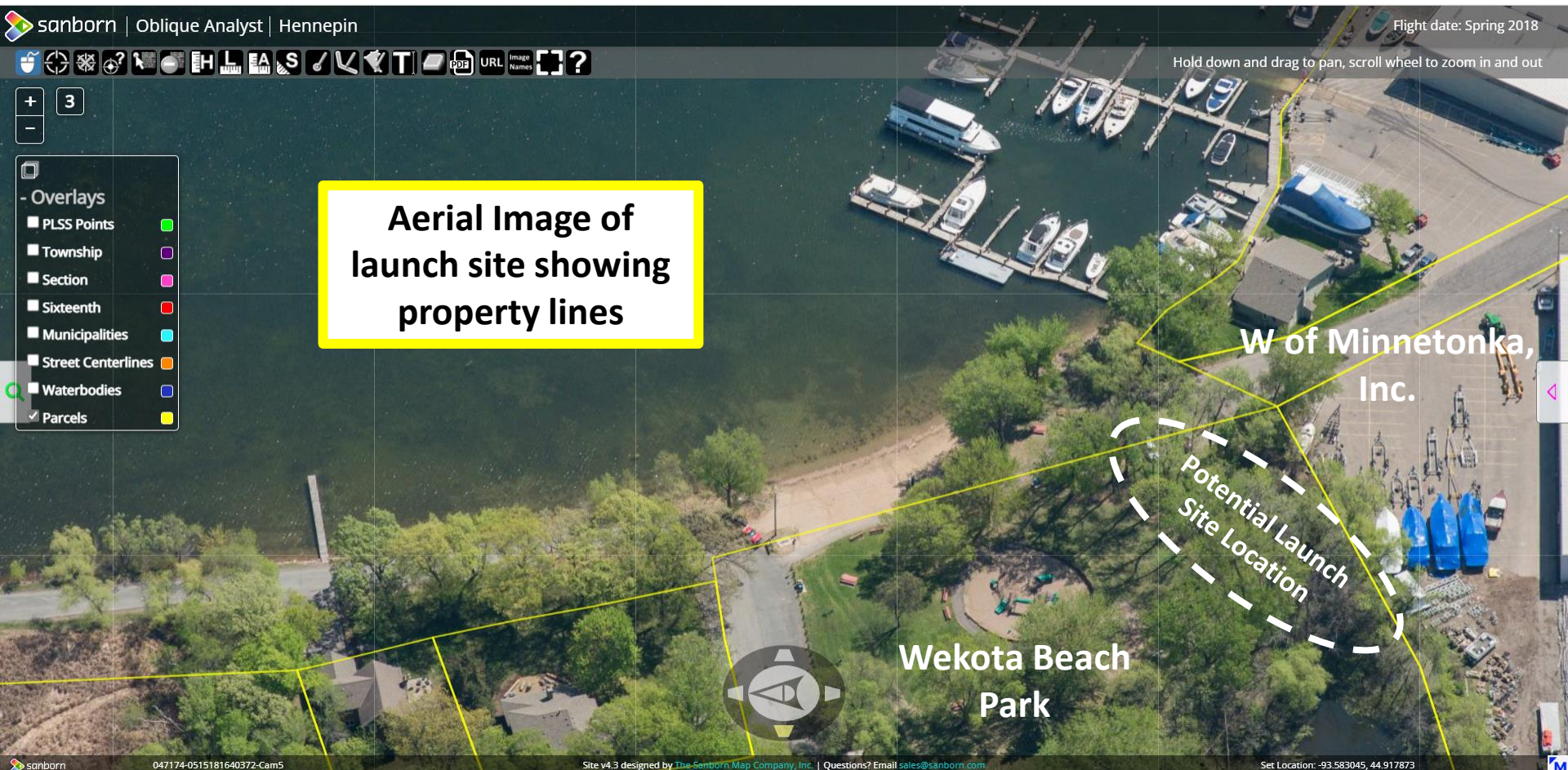
- LEGEND:
- S = SLIDE DOCKS
 - R = RESIDENTIAL DOCKS
 - C = COMMERCIAL DOCKS
 - T = TRANSIENT DOCKS

DOCK SURVEY
FOR THE CITY OF
EXCELSIOR, MINNESOTA

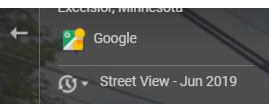
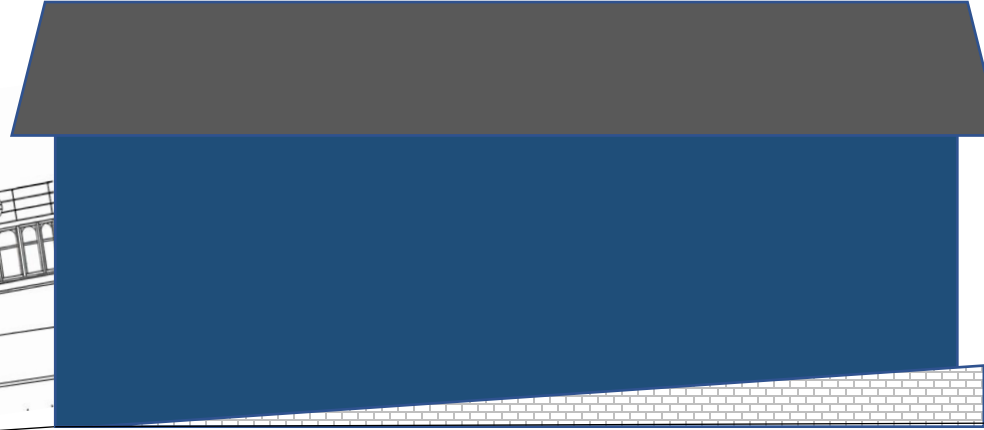
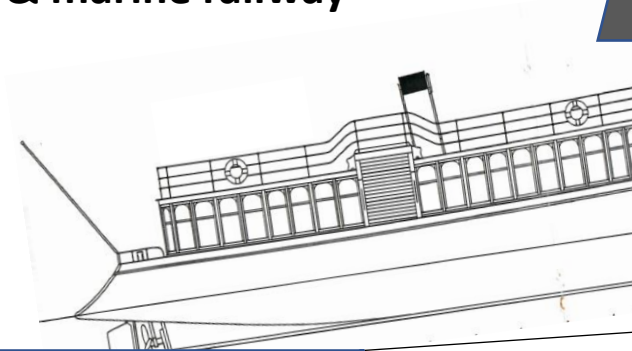
DATE: 06/18/2020
DRAWN BY: J. H. HARRIS
CHECKED BY: J. H. HARRIS
DATE: 06/18/2020
SCALE: AS SHOWN
PROJECT NO.: 01140-85
SHEET NO.: 1 OF 1 SHEETS

WSP PROJECT NO. 01140-85
PORT OF EXCELSIOR BAY
ASBUILT SITE SURVEY

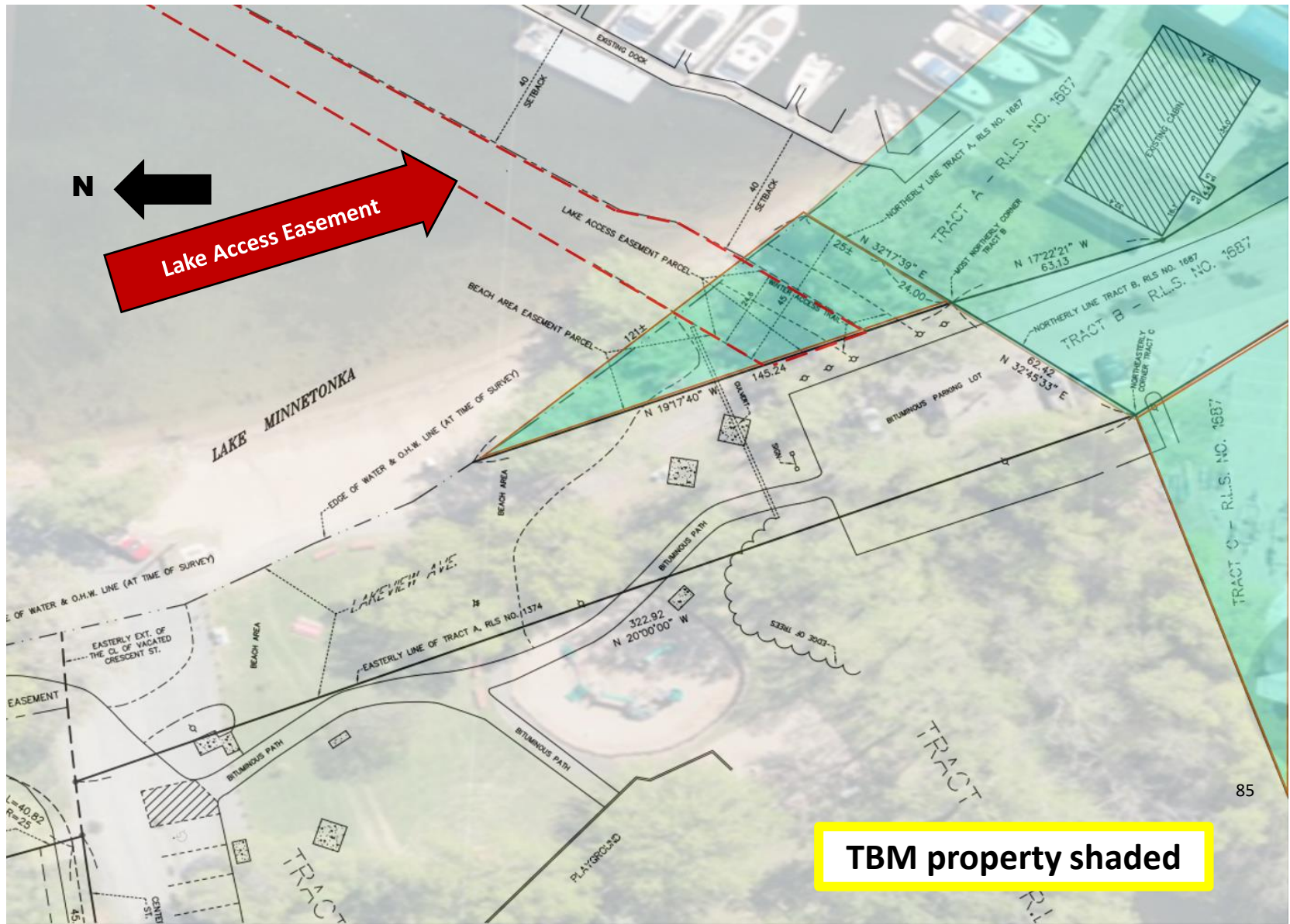
WSP PROJECT NO. 01140-85
PORT OF EXCELSIOR BAY
ASBUILT SITE SURVEY



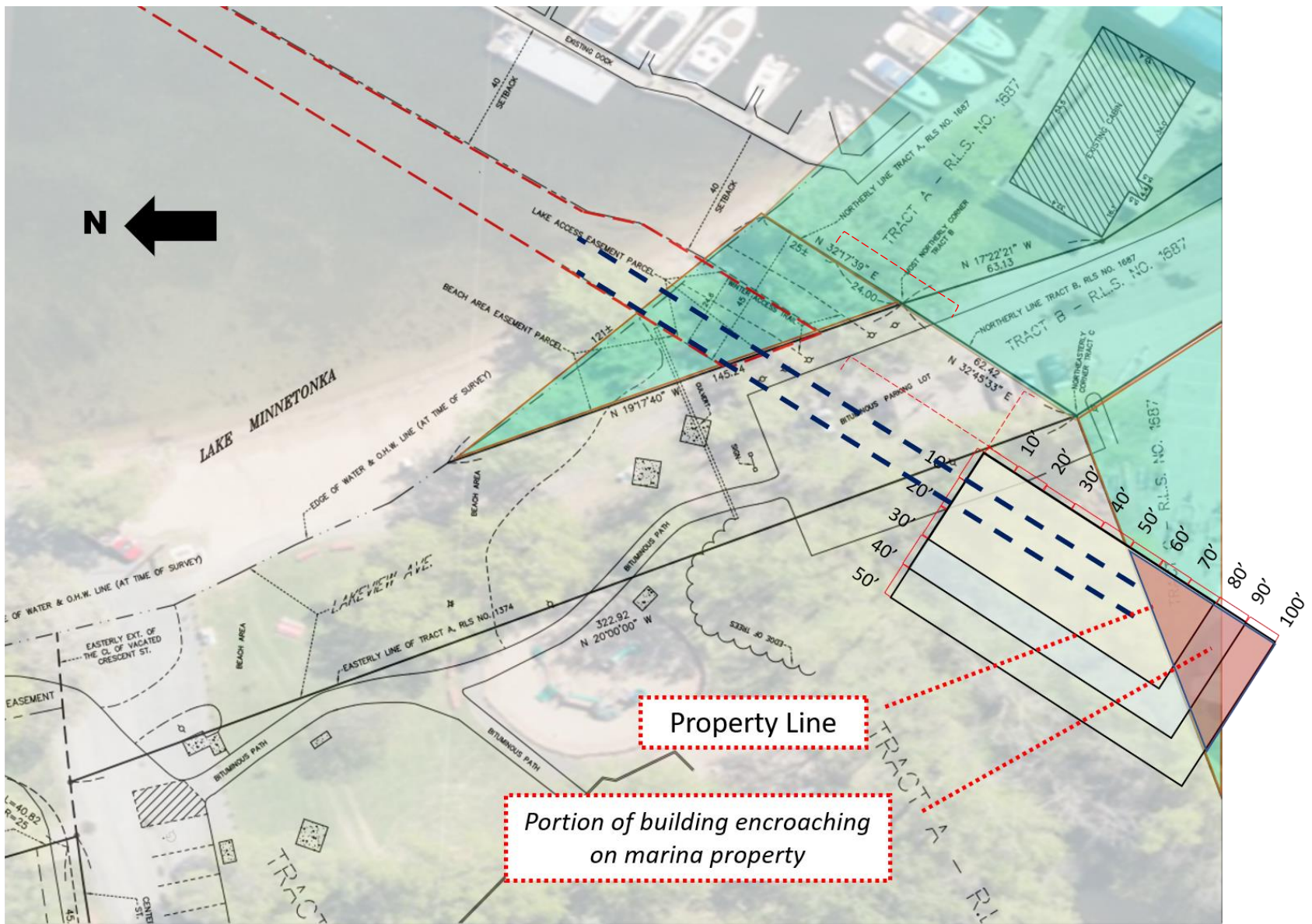
Launch Site would feature new Barn & marine railway

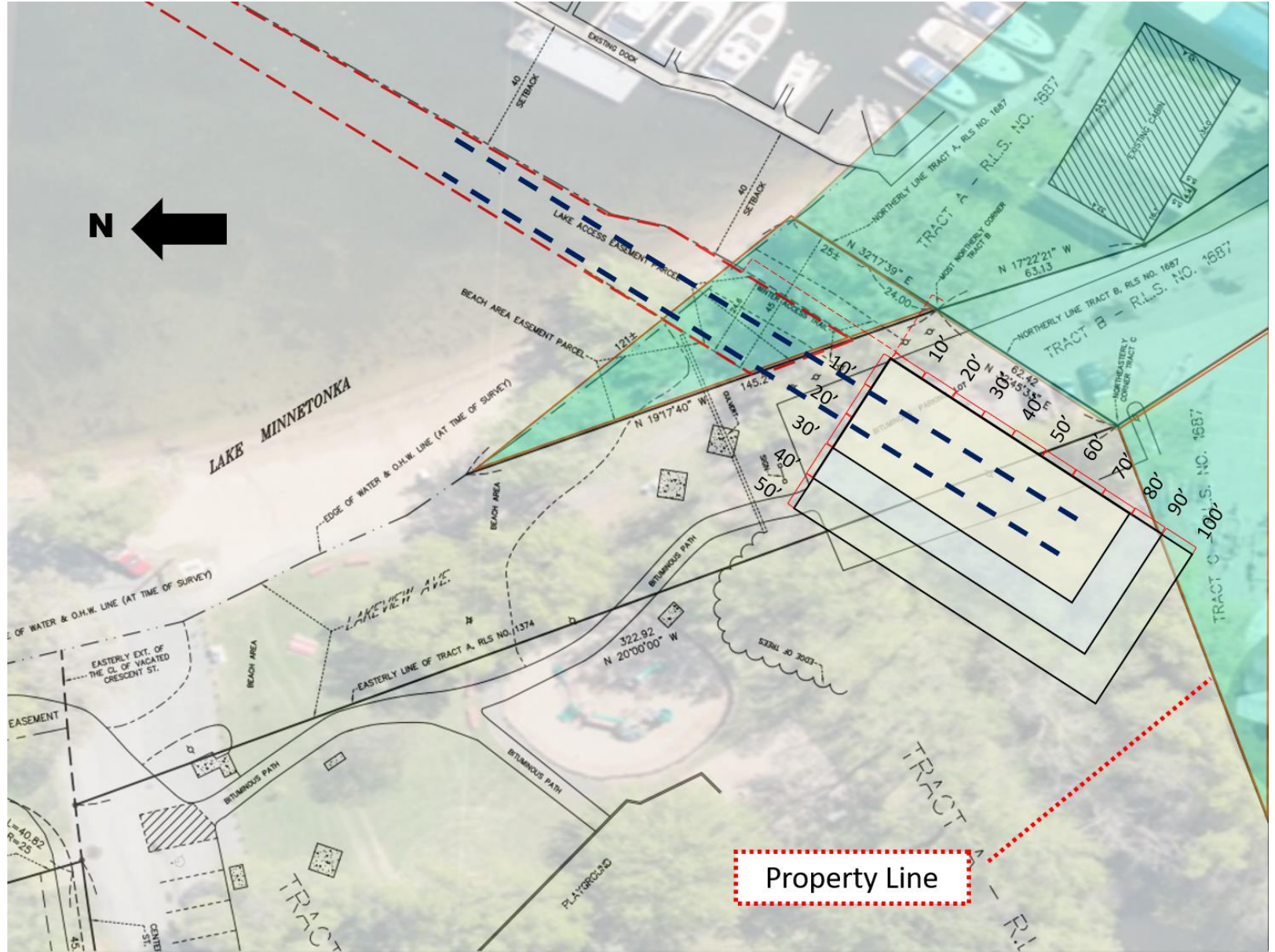


Composite of aerial image overlaid on top of property survey



TBM property shaded





Overall Site Assessment...

Positives:

- Marine railway system
- New Barn

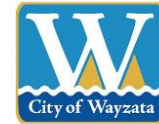
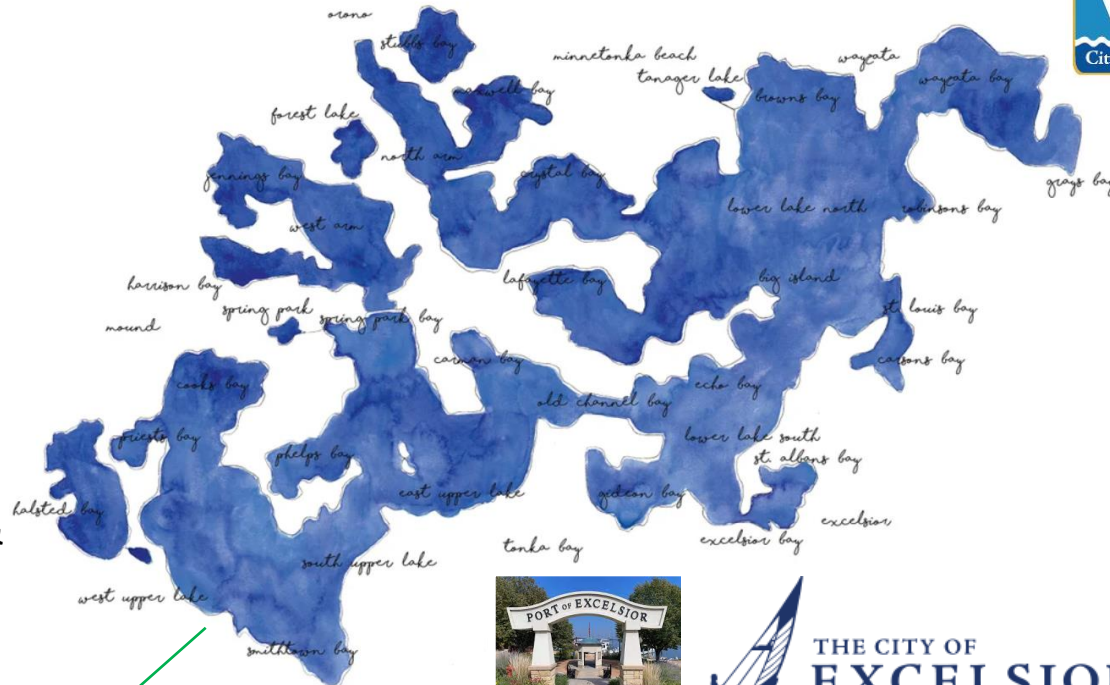
Negatives...

- Narrowness of the easement
- Easement places severe restrictions on location & size of new Barn
- Wetland area complicates construction, costs + drainage of neighboring property
- Shallow area requires extensive dredging
- Impact on the park/beach area for residents
- Complications over on-going access to the building

Lake Minnetonka Regional Park

Operational Vision:

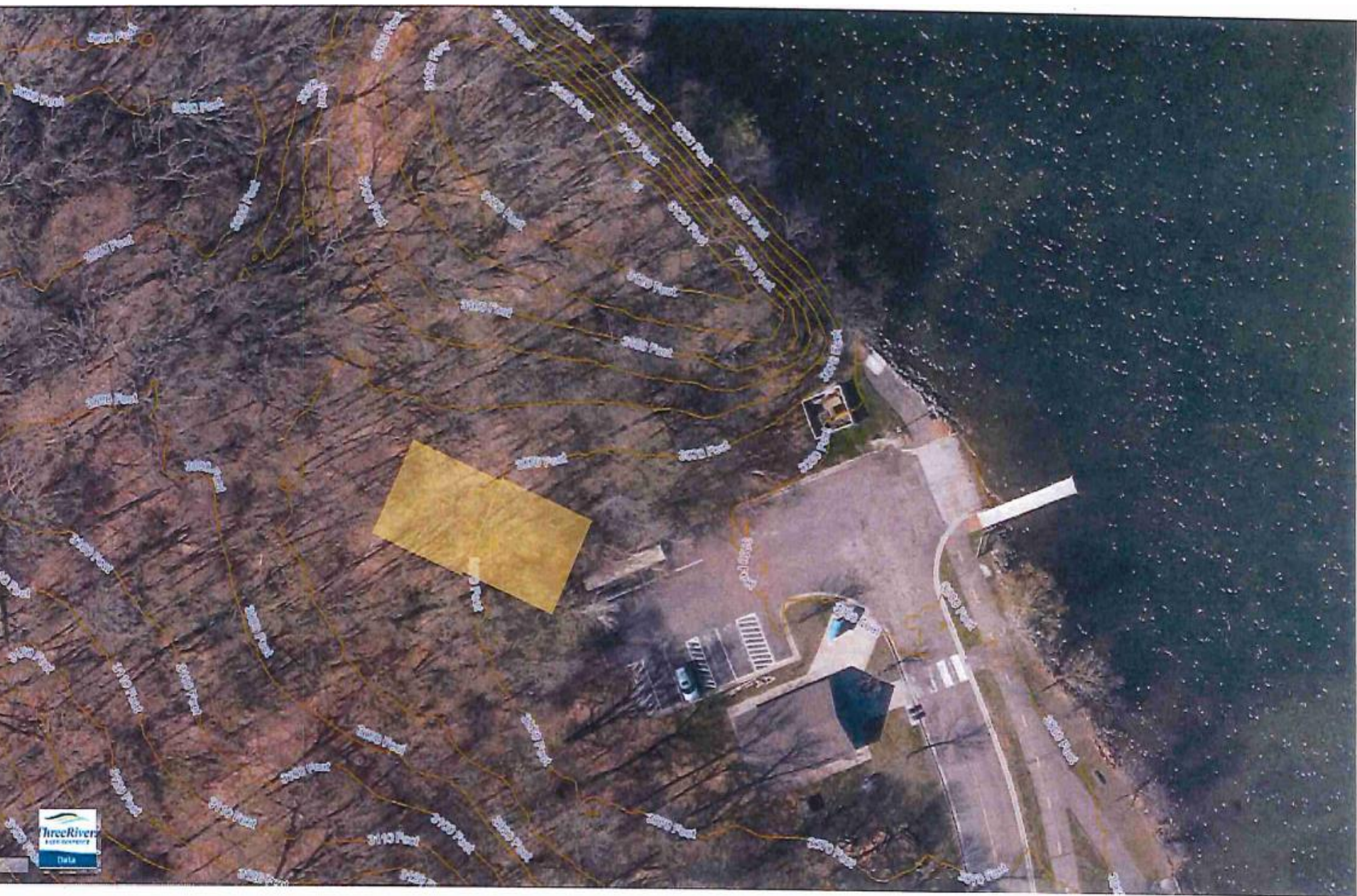
- *Minnehaha* would launch & haul-out at LMRP
- Home Dock in Excelsior or Wayzata
- Cruises operate from Excelsior & Wayzata



**LAKE MINNETONKA
REGIONAL PARK**

Minnehaha's on-the-water 'trails' would complement TRPD's existing Lake Minnetonka offerings...





Proposed Location for new Storage shed



New Ramp Scenario

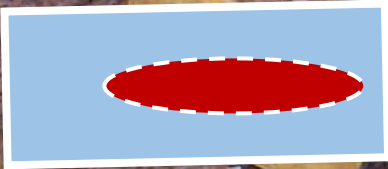
Proposed *Minnehaha* Winter Storage/Maintenance Barn
50' W x 120' L x 30" H
shielded behind knoll
(angled for approach to ramp)



New 100' Pile Driven Dock

New Precast Concrete Ramp – extended to 150', gentler incline, dredged as necessary to ensure 8.5' depth NWL

Schmid Farmhouse



Graded, no curb

Lowered grade

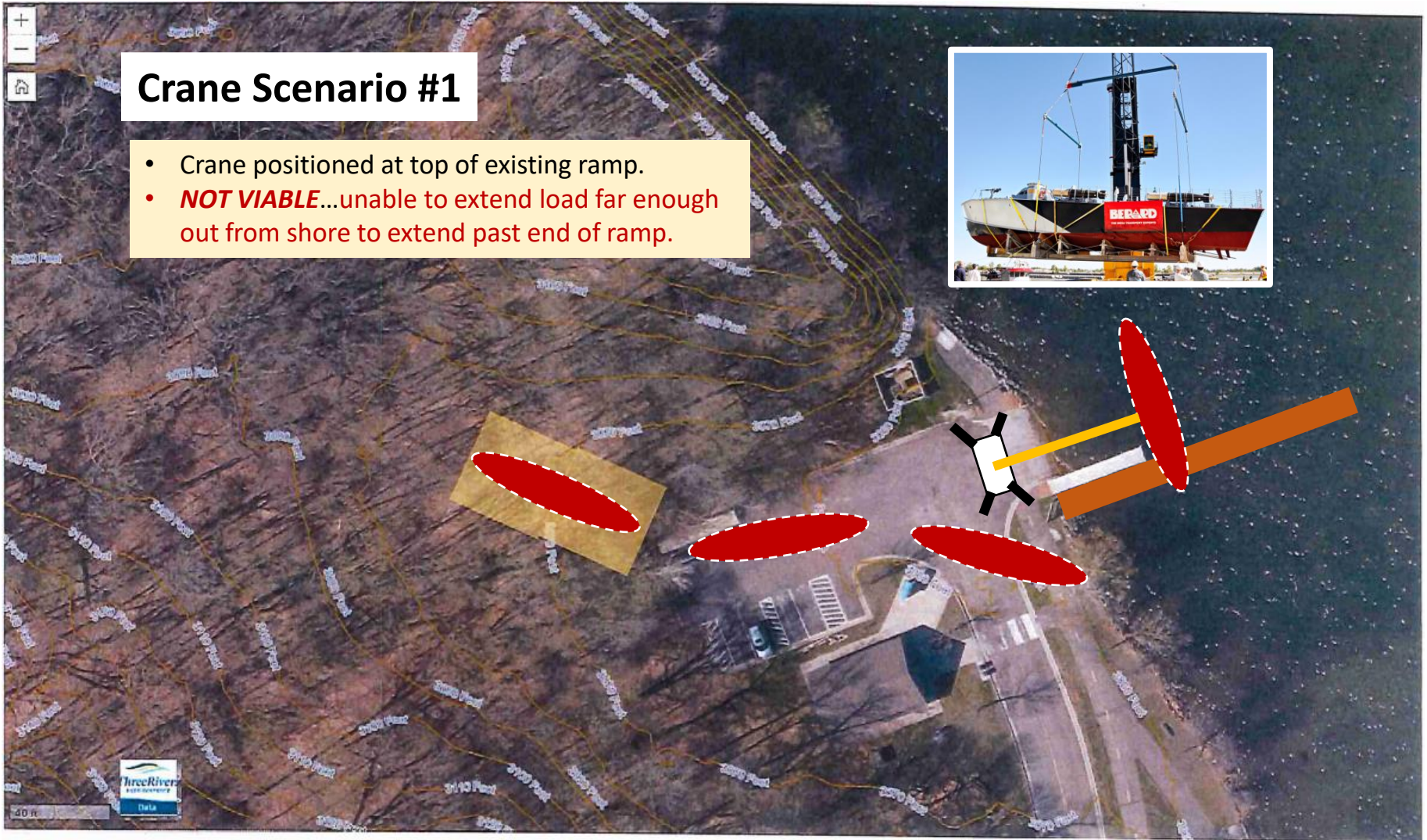
Reduce crown

Lowered grade

Existing boat ramp replaced with longer, more gradual ramp – ramp would be designed for use by both public & *Minnehaha*

Crane Scenario #1

- Crane positioned at top of existing ramp.
- **NOT VIABLE**...unable to extend load far enough out from shore to extend past end of ramp.



Overall Site Assessment...

Positives:

- Flexible to accommodate ramp, rail, or crane
- Negligible impact on neighboring residents
- Modest dredging required

Negatives...

- Cost – new barn, ramp
- Shared public use of ramp a potential issue – particularly in winter
- Remote location for volunteers to access in off-season
- Unknown ability to get the boat to the site

New Videos...

The Untold Story of Keeping *Minnehaha* Shipshape



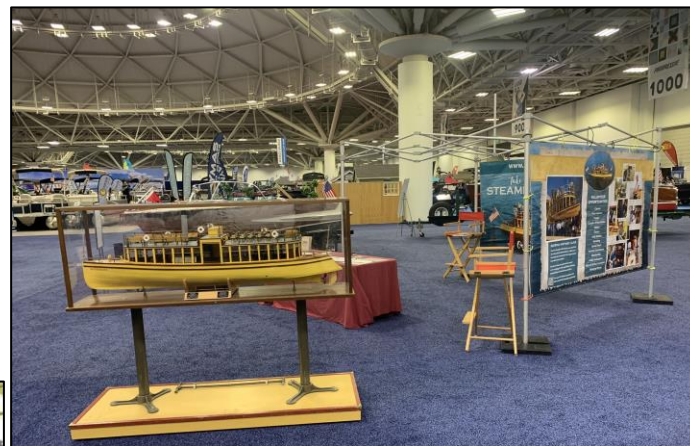
An Audacious Dream and a Remarkable Journey



Community Outreach...



**Westonka
Historical
Society**



2022 Mpls Boat Show

**Legacy
of the Lakes
Museum**



**Wayzata
Chilly Open**



ELMHS
50
YEARS

In The Wake of
Lake
Minnetonka's
Express Boats

History Cruise 8.08.2022

Presented by Tom McCarthy

Excelsior-LM Historical Society